

Sandvik DP series Unleash the power



Rock-steady power. For the toughest drilling jobs

Are you looking for a drill with the power and control to handle the toughest conditions in a mine or a quarry? Then take a close look at the Sandvik DP surface top hammer rigs (previously known as Tamrock Pantera Rock Pilot). These unique drilling machines have the power to make their way through your most difficult drilling tasks — including soft formations and broken rock — and with the advanced Rock Pilot system that power is always under your complete control.

The DP series is at its best in **production drilling** in quarries and open pit mines, **pre-splitting**, **development works**, sampling and pit wall drainage

POWER AND PERSEVERANCE. INVINCIBLE COMBINATION

Sandvik DP series supplies the best value in the **76 – 152 mm (3”-6”)** hole size range, efficiently cutting down your production costs. The DP rigs are built with productivity as the target; they offer the widest hole range, a choice of three high capacity rock drills and a large selection of rock tools. Their Powerful CAT diesel engines, robust construction, oversized components and strong feed provide **excellent penetration, straight drilling**, and **improved steel life**. When you need high production and high quality in every hole you drill, the Sandvik DP is the ideal solution.

Proven productivity



TARGETING AT DRILL EXCELLENCE

Our target at Sandvik is to design drills that do their individual jobs exceptionally well. Therefore, our engineers are constantly exploring the possibilities for technology and process development at job sites, in the offices, at the factories.



INVINCIBLE SYSTEM

Sandvik GT60 tools for 92 – 152 mm hole range are especially designed for DPI500/DPI100 rigs. Together they make an invincible combination that optimizes the energy transfer and guarantees fast penetration.



More holes than ever before

Reliability second to none

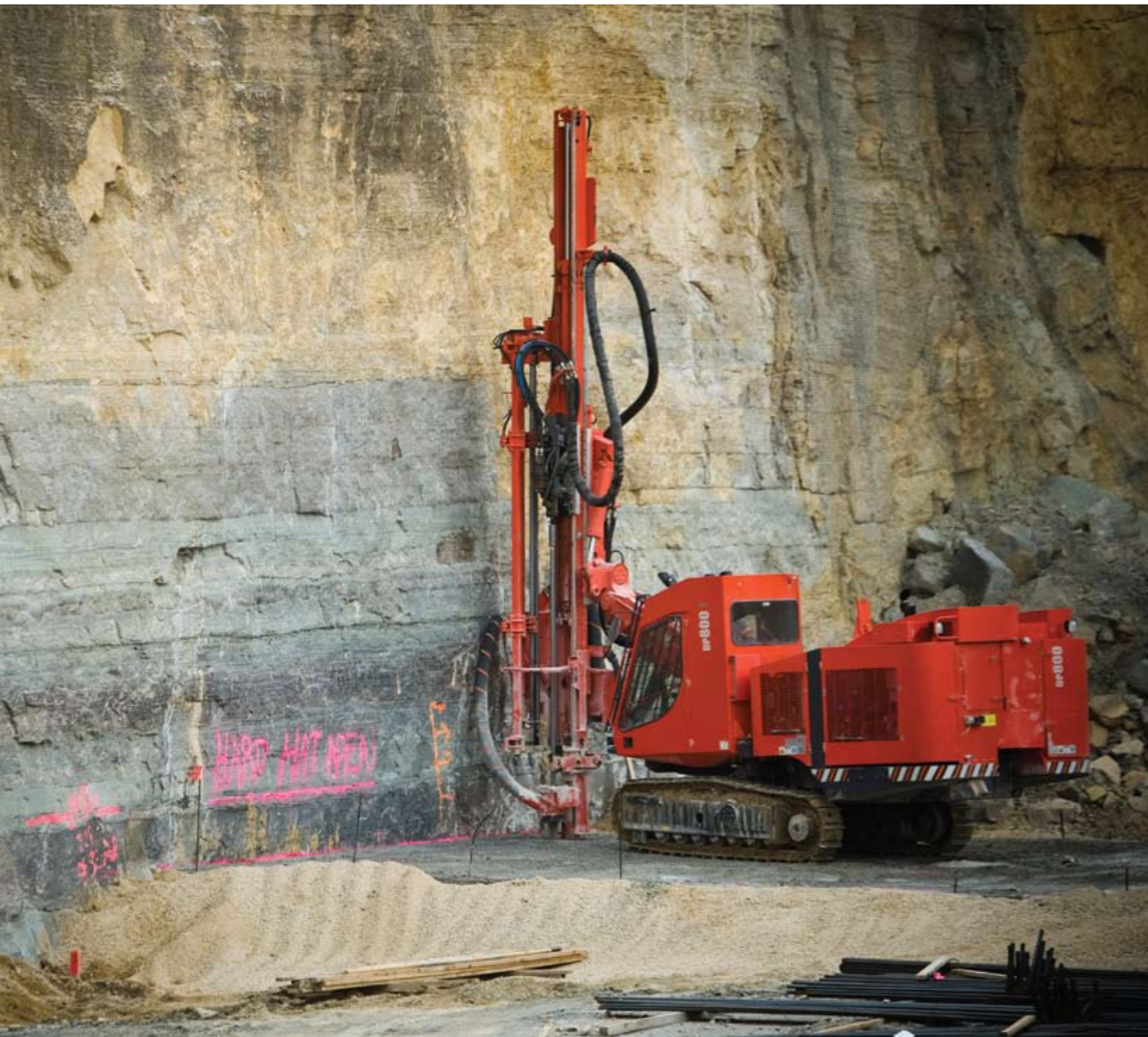
The DP series offers a choice of three proven powerful drifters, **HL800T**, **HL1010** and **HL1560T**, supplying fast penetration in the hole range of 76 – 152 mm (3 - 6"). Together with Sandvik Rock Pilot control system and drilling tools, they provide outstanding tool economy and low total drilling cost as well as ensure excellent hole quality and the best possible blasting results.

ROCK PILOT OFFERS TOP-CLASS CONTROL

Sandvik's Rock Pilot system provides the ultimate in drilling control. Whatever the drilling task, the superfast control system **adjusts drilling power automatically**, reacting to changing rock formations and sending the optimal amount of power to the rig's drill rods.

Collaring phase goes smoothly and rapidly with the Rock Pilot — it goes down the hole all the time **without any back and forth pumping**. As a result, you will drill more holes — and straighter holes — than ever before, even in the worst drilling conditions.

The Sandvik DP with Rock Pilot control system is **simple to operate**. The machine is equipped with intuitive controls that allow the operator to finetune the system manually when meeting especially unusual conditions. Basic settings are practically located on the control block.



Straight drilling

TECHNICAL DETAILS

DP800	Hole diameter	76 - 127 mm (3 - 5")
	Drill steel	45,51 mm (1 3/4", 2")
	Weight	18 500 kg (40 800 lb)
	Width	2,5 m (8'-2")
	Height	3,2 m (10'-6")
	Length	10,5 m (34'-5")
	Rock drill	HL800T, 21 kW (28.2 hp)
	Tramming speed	1,7/3,5 km/h (1.1/2.2 mph)
	On-board compressor	9,6 m ³ /min/ up to 10 bar (339 cfm/min/145 PSI)
	Dust collector	35 m ³ /min at 1200 mm vacuum H ₂ O (1236 cfm/min at 47" vacuum H ₂ O)
Engine	CAT C9, 205 kW (275 hp), 2 200 rpm	
DP900	Hole diameter	89 - 127 mm (3½ - 5")
	Drill steel	51,60 mm (2", 2 3/8")
	Weight	18 700 kg (41 200 lb)
	Width	2,5 m (8'-2")
	Height	3,2 m (10'-6")
	Length	10,5 m (34'-5")
	Rock drill	HL1010, 21 kW (28.2 hp)
	Tramming speed	1,7/3,5 km/h (1.1/2.2 mph)
	On-board compressor	9,6 m ³ /min/ up to 10 bar (339 cfm/min/145 PSI)
	Dust collector	35 m ³ /min at 1200 mm vacuum H ₂ O (1236 cfm/min at 47" vacuum H ₂ O)
Engine	CAT C9, 205 kW (275 hp), 2 200 rpm	
DPI100	Hole diameter	89 - 140 mm (3½ - 5½")
	Drill steel	51,60 mm (2", 2 3/8") MF rods 76,87 mm (3", 3½") Tubes
	Weight	18 800 kg (41 500 lb)
	Width	2,5 m (8'-2")
	Height	3,2 m (10'-6")
	Length	10,5 m (34'-5")
	Rock drill	HL1010, 25 kW (33.5 hp)
	Tramming speed	1,7/3,5 km/h (1.1/2.2 mph)
	On-board compressor	14 m ³ /min/ up to 10 bar (494 cfm/min/145 PSI)
	Dust collector	35 m ³ /min at 1200 mm vacuum H ₂ O (1236 cfm/min at 47" vacuum H ₂ O)
Engine	CAT C9, 224 kW (300 hp), 2 100 rpm	
DPI500	Hole diameter	89 - 140 mm (3½ - 5½")
	Drill steel	51,60 mm (2", 2 3/8") MF rods 76,87 mm (3", 3½") Tubes
	Weight	19 200 kg (42 300 lb)
	Width	2,5 m (8'-2")
	Height	3,2 m (10'-6")
	Length	10,5 m (34'-5")
	Rock drill	HL1560T, 28 kW (37.5 hp)
	Tramming speed	1,7/3,5 km/h (1.1/2.2 mph)
	On-board compressor	14 m ³ /min/ up to 10 bar (494 cfm/min/145 PSI)
	Dust collector	35 m ³ /min at 1200 mm vacuum H ₂ O (1236 cfm/min at 47" vacuum H ₂ O)
Engine	CAT C11, 261 kW (350 hp), 2 100 rpm	
DPI524	Boom	Fixed*
	Hole diameter	89 - 140 mm (3½ - 5½")
	Drill steel	60 mm (2 3/8") MF rods
	Hole diameter	102 - 152 mm (4 - 6")
	Drill steel	87 mm (3½") Tubes
	Weight	19 500 kg (43 000 lb)
Height	3,7 m (12'-1")	
Length	10,9 m (35'-8")	

*DP800, DP900, DPI100, DPI500 are equipped with telescope booms
Other technical details as DPI500



The Sandvik TIM measuring system guarantees hole accuracy. It is available in three models.

- TIM 2305 for laser-level based hole inclination and depth
- TIM 2303 for hole inclination and depth
- TIM 2302 for hole inclination



Well-thought-out features. Productive operators

Hole spotting is fast and easy with the Sandvik DP series. The rigs are equipped with an **extendable telescopic boom** and direct hydraulic controls for boom movements. The cabin offers an all-around view to the spotting area through its expansive safety glass, and adding to the visibility are seat or side panel integrated controls.

Drilling goes smoothly with the DP series simple, easy-to-use joysticks that put **steplless control** of the power at the operator's fingertips. Comfortable and practical joystick control provides fast and efficient rod handling as well.

The DP series cabin offers total operator safety, ergonomony and comfort. It is ROPS and FOPS tested and provides a climate-controlled environment that filters out dust and keeps noise levels **below 80 dB (A)**.

STRAIGHTFORWARD SERVICE. MORE DRILLING TIME.

The Sandvik DP series supplies ease of service. **All cover panels can be opened** and coolers are practically placed in a vertical direction. The hydraulic valve block with measuring ports is easily accessible, and the machine is equipped with safety features such as warning lights, safety shut-downs and wear indicators.

Fast fill connections for fuel, water, engine coolant as well as hydraulic and engine oil is available optionally.



Top productivity



Excellent visibility





GLOBAL NETWORK

Sandvik has 3 500 service technicians spread in every corner of the world. They are only a local phone call away when you need help.



Smart services benefit your bottom line



Strong backup keeps your business running smoothly

SUPPORT WHERE IT COUNTS. ON THE JOB SITE

Service is, of course, a matter of being available when problems occur. But we at Sandvik prefer seeing it more as a question of being proactive. Investment in preplanned service and tools like Sandvik SanRemo and Security+ warranty program will help you protect your business from unexpected risks.

Sandvik's **SanRemo service system** includes a productivity gauge and a GPS locator. The system tells you the load put on a machine and allows you to compare information on different machines. You can plan your production, services, schedules and transportations well ahead. Moreover, Sandvik can supply you with a spare parts recommendation. You will also get a maintenance card that increases the resale value of your drill. SanRemo runs on a standard PC.

The Sandvik **Security+ warranty program**, extends the standard one-year warranty to a two year protection period. You can choose from three levels of coverage: Platinum, Gold and Silver – whichever you feel best suits your needs.

Sandvik **service contracts** let you concentrate on your main processes. They come in different levels so you can choose a program that meets your particular needs. **Sandvik drill steel, ready-made maintenance kits and genuine spare parts** ensure trouble-free drilling and maximize productivity.

THERE IS ALWAYS SOMETHING MORE TO KNOW

The new Sandvik **operator training concept** offers you authorized trainers, simulator training and a modular curriculum – you can choose which modules suit best for your purposes. You can practice your skills in the simulator without any risks to you or the rig. The simulator brings out the best in every driller. Furthermore, simulator training keeps the actual machines in productive work.

The **Sandvik SimQuarry™** is a smart but practical simulation tool for rock excavation process optimization. This tool helps you define the best combination of equipment, finetune your excavation and discover the ways of improving your profitability. If you feel that you would need to learn more about the overall quarry or open pit process, the **Sandvik Quarry Academy** is an excellent option. On this training course you will improve your competence in quarry or open pit management.

Productivity in Action

Sandvik is a high-technology engineering group with world-leading positions in selected areas – tools for metal working, advanced materials technology, and mining and construction. We employ more than 47 000 people and are represented in 130 countries.

Sandvik Mining and Construction represents one third of the overall Sandvik Group and serves a broad range of customers in construction, mineral exploration, mining and bulk materials handling. Our construction expertise covers quarrying, tunneling, demolition and recycling, and other civil engineering applications. Our mining products and services support customers on the surface and under ground, in all mineral, coal and metal mining applications from exploration to ore transportation.

