

PULLEY CLEANER

MS1

MS1 - pulley cleaner is used by the BK- and BL-tail pulleys. The ribs of the cleaner convey the material to the belt sides from where it is easy to clean.

The pulley cleaner is installation and maintenance friendly with the installation screws easy to handle.

The sectional holes, on the under edge of the rip-plate, make the adjustment possible so that when the belt is ascending from the pulley, the rip-plate is possible to install near the belt surface as a gap cover.

Continuous variation of the upper edge of the rip-plate, guarantees the accurate adjusting of the plate cutter against the pulley surface.

ORDERING EXAMPLE:

MS1-R60-500-1150

Type code

Position of bearing housing

R = vertically fastening screws

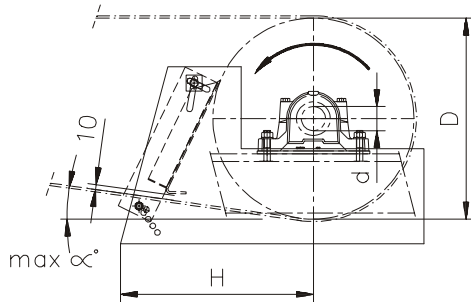
S = horizontally fastening screws

Shaft diameter of pulley d (mm)

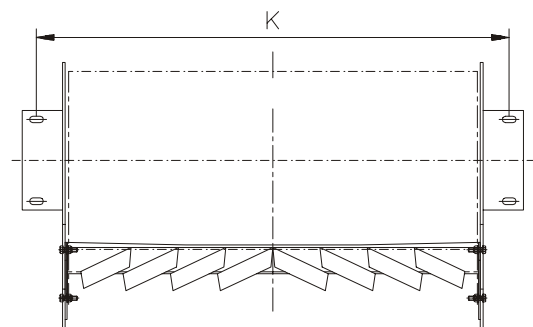
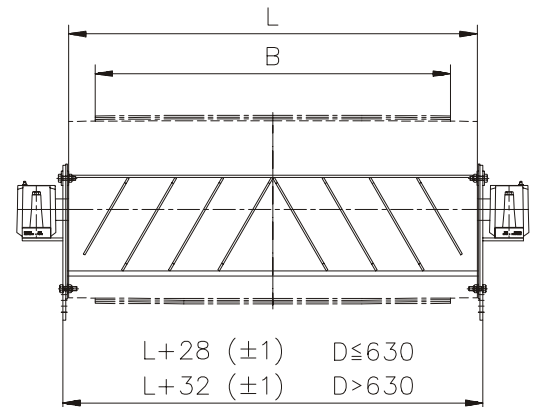
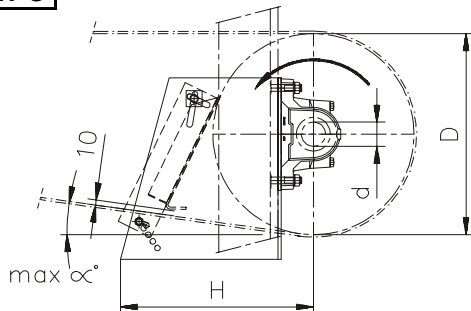
Pulley diameter D (mm)

Shell length of pulley L (mm)

POSITION R



POSITION S



D	320	400	500	630	800	1000
αmax	15	11	8	7	5	3
H	360	410	480	560	670	800

L	B	Weight (kg)					
		D					
		320	400	500	630	800	1000
600	500	23	29	38	49	77	102
750	650	24	31	40	51	80	105
950	800	27	34	44	57	87	113
1150	1000	28	36	47	60	91	118
1400	1200	31	40	52	66	98	127
1600	1400	42	53	68	85	123	156
1800	1600	45	57	73	91	129	164
2000	1800	48	62	78	98	138	174
2200	2000	51	64	82	102	143	180

d	K	Bearing housing of pulley
40	L+180	SNL 509
50	L+180	SNL 511-609
60	L+180	SNL 513-611
70	L+180	SNL 516-613
80	L+190	SNL 518-615
90	L+200	SNL 520-617
100	L+210	SNL 522-619
110	L+230	SNL 524-620
115	L+240	SNL 526
125	L+250	SNL 528
135	L+270	SNL 530
140	L+280	SNL 530

PULLEY CLEANER

MS2

The pulley cleaner MS2 is used with take-up pulleys BK and BL, for gravity take-up applications. In this case the pulleys operate on the dirty side of the belt, being thus exposed to material accumulation.

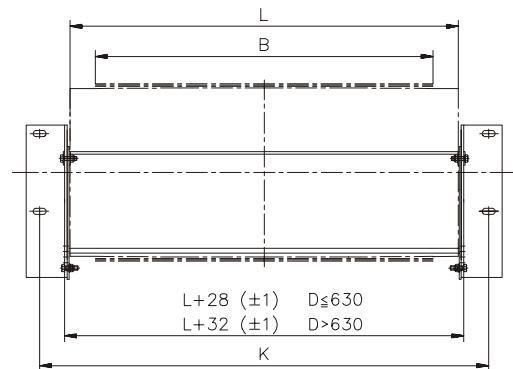
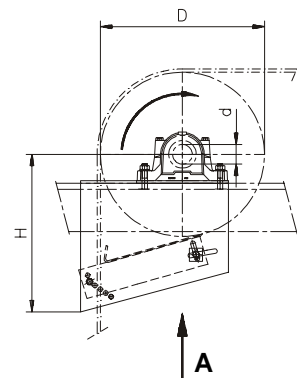
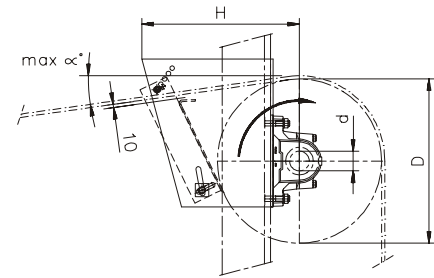
MS2 cleaner must be fitted so that the removed materials fall to the open space. The pulley cleaner is installation and maintenance friendly with the installation screws easy to handle.

In extreme applications, i.e. with very sticky materials, rubber lagging is recommended for the pulley-in addition to the MS2 cleaner. Because of the stepless adjustment of the upper section of the material plate, the cleaner can be installed accurately.

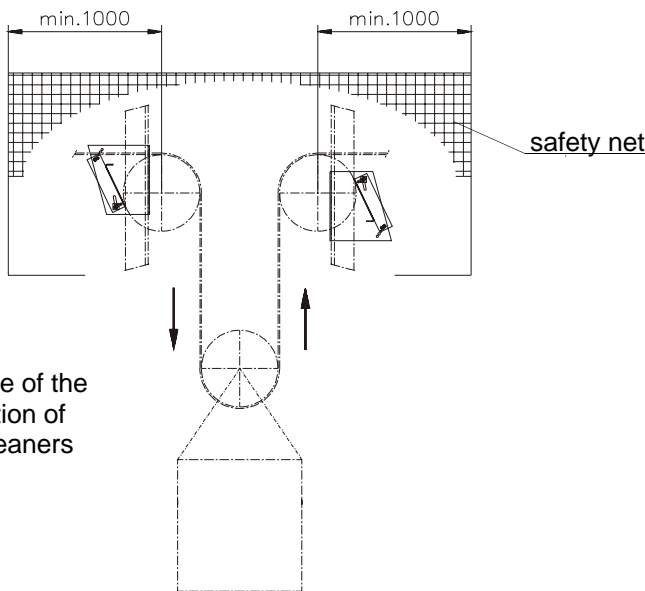
The gap protection in gravity take-up applications is always arranged by a separate safety net.

ORDERING EXAMPLE: **MS2-S60-500-1150**

Type code	MS2-S60-500-1150
Shaft diameter of pulley d (mm)	
Pulley diameter D (mm)	
Shell length of pulley L (mm)	



DIRECTION A



Example of the installation of MS2 cleaners

D	320	400	500	630	800	1000
α_{max}	15	11	8	7	5	3
H	360	410	480	560	670	800

d	K	Bearing housing of pulley
40	L+180	SNL 509
50	L+180	SNL 511-609
60	L+180	SNL 513-611
70	L+180	SNL 516-613
80	L+190	SNL 518-615
90	L+200	SNL 520-617
100	L+210	SNL 522-619
110	L+230	SNL 524-620
115	L+240	SNL 526
125	L+250	SNL 528
135	L+270	SNL 530
140	L+280	SNL 530

L	B	Weight (kg)					
		D					
		320	400	500	630	800	1000
600	500	19	24	32	41	68	90
750	650	21	26	34	44	71	94
950	800	23	28	37	47	75	99
1150	1000	24	31	40	50	79	104
1400	1200	27	34	43	55	85	110
1600	1400	37	47	60	74	109	139
1800	1600	40	50	64	80	116	147
2000	1800	43	54	68	85	123	155
2200	2000	46	58	73	90	129	163

PULLEY CLEANER

MS3

MS3 - pulley cleaner is used by the BEE-tail pulleys. The ribs of the cleaner convey the material to the belt sides from where it is easy to clean.

The pulley cleaner is installation and maintenance friendly with the installation screws easy to handle.

The sectional holes, on the under edge of the rip-plate, make the adjustment possible so that when the belt is ascending from the pulley, the rip-plate is possible to install near the belt surface as a gap cover.

Continuous variation of the upper edge of the rip-plate, guarantees the accurate adjusting of the plate cutter against the pulley surface.

ORDERING EXAMPLE: **MS3-R90-500-1150**

Type code

Position of bearing housing

R = vertically fastening screws

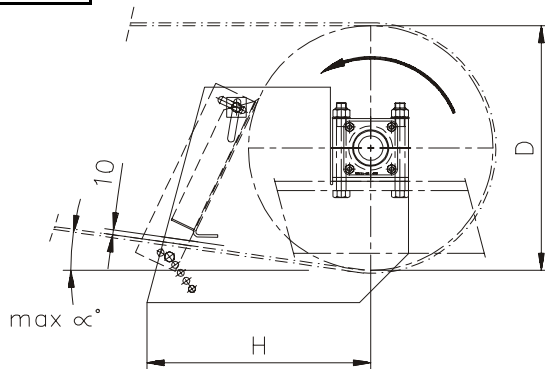
S = horizontally fastening screws

Outer diameter of bearing D1 (mm)

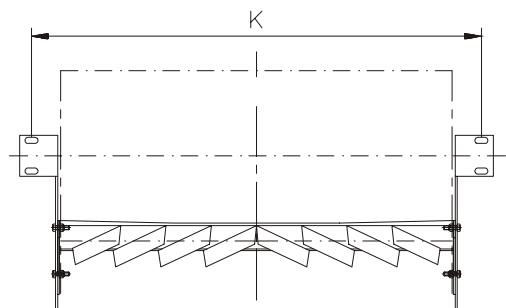
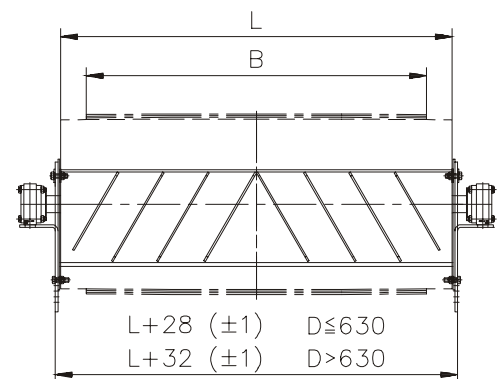
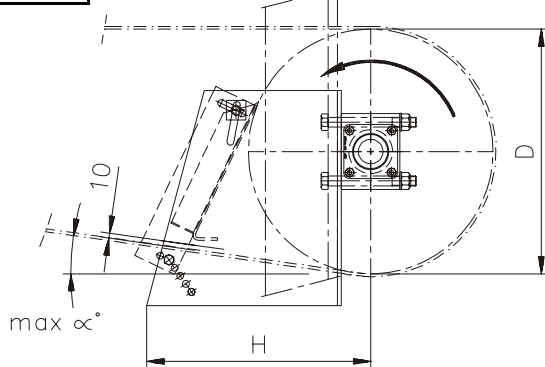
Pulley diameter D (mm)

Shell length of pulley L (mm)

POSITION R



POSITION S



D	320	400	500	630	800	1000
α_{max}	15	11	8	7	5	3
H	345	395	460	545	655	805

Outer diameter of bearing D1	K	Bearing housing of pulley
80	L+180	BZC11-80
90	L+180	BZC11-90
110	L+180	BZC11-110
140	L+180	BZC11-140
180	L+180	BZC11-180

L	B	Weight (kg)					
		D					
		320	400	500	630	800	1000
600	500	20	26	33	43	70	94
750	650	22	28	35	46	73	98
950	800	24	31	39	51	79	106
1150	1000	26	33	42	54	84	111
1400	1200	29	37	47	60	91	120
1600	1400	39	50	63	80	115	149
1800	1600	42	54	68	85	122	157
2000	1800	46	59	73	92	131	167
2200	2000	48	61	77	96	136	172

PULLEY CLEANER

MS4

The pulley cleaner MS4 is used with take-up pulleys BEE for gravity take-up applications. In this case the pulleys operate on the dirty side of the belt being thus exposed to material accumulation.

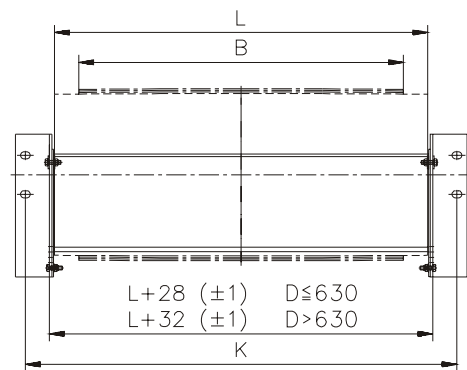
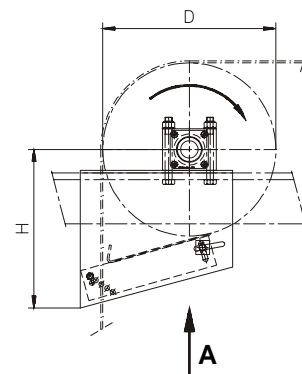
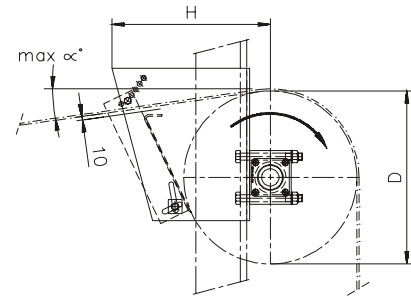
MS4 cleaner must be fitted so that the removed materials fall to the open space. The pulley cleaner is installation and maintenance friendly with the installation screws easy to handle.

In extreme applications, i.e. with very sticky materials, rubber lagging is recommended for the pulley-in addition to the MS4 cleaner. Because of the stepless adjustment of the upper section of the material plate the cleaner can be installed accurately.

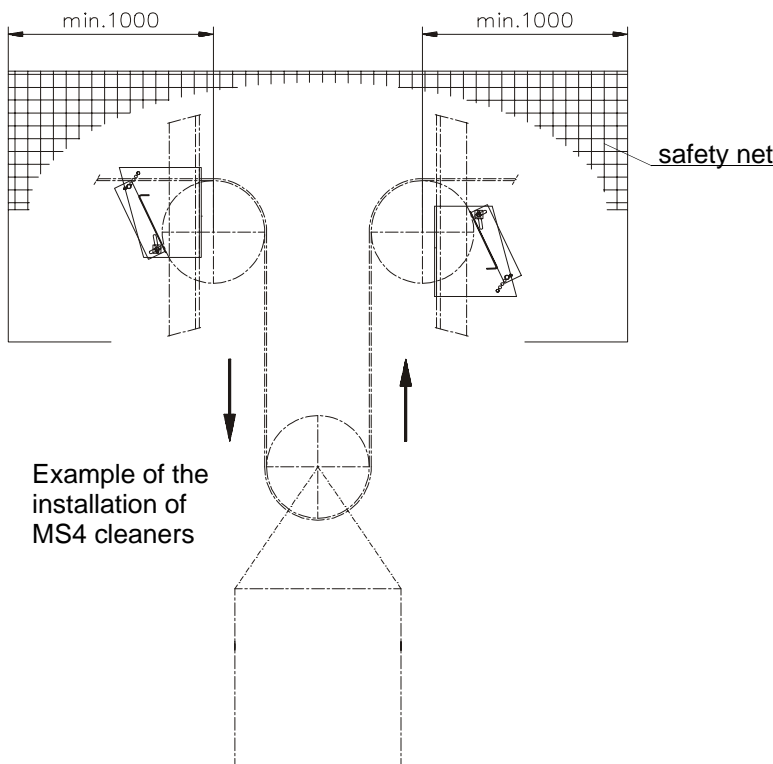
The gap protection in gravity take-up applications is always arranged by a separate safety net.

ORDERING EXAMPLE: MS4-S90-500-1150

Type code	MS4-S90-500-1150
Outer diameter of bearing D1 (mm)	90
Pulley diameter D (mm)	500
Shell length of pulley L (mm)	1150



DIRECTION A



Outer diameter of bearing D1	K	Bearing housing of pulley
80	L+180	BZC11-80
90	L+180	BZC11-90
110	L+180	BZC11-110
140	L+180	BZC11-140
180	L+180	BZC11-180

D	320	400	500	630	800	1000
α_{max}	15	11	8	7	5	3
H	345	395	460	545	655	805

L	B	Weight (kg)					
		D					
		320	400	500	630	800	1000
600	500	18	23	29	38	63	86
750	650	19	25	31	40	66	90
950	800	21	27	34	44	70	95
1150	1000	23	29	37	47	75	100
1400	1200	25	32	40	51	80	106
1600	1400	36	45	56	71	104	135
1800	1600	39	49	61	76	111	143
2000	1800	42	52	65	82	118	151
2200	2000	44	56	70	87	124	159

PULLEY CLEANER

MS5

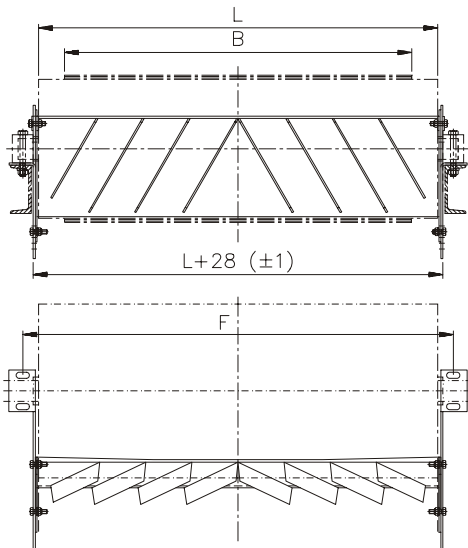
MS5 -pulley cleaner is used by the BP -tail pulleys. The ribs of the cleaner convey the material to the belt sides from where it is easy to clean.

MS5 -pulley cleaner is possible to fit directly under the US5 fastener of the BP -pulley, to the UR8 -take-up device or UR2(3)- take-up bar. When fitting it to the take-up device, the cleaner will automatically be moved with the pulley when it is tensioned.

The pulley cleaner is installation and maintenance friendly with the installation screws easy to handle.

The sectional holes, on the under edge of the rip-plate, make the adjustment possible so that when the belt is ascending from the pulley, the rip-plate is possible to install near the belt surface as a gap cover.

Continuous variation of the upper edge of the rip-plate, guarantees the accurate adjusting of the plate cutter against the pulley surface.



L	B	Weight (kg)			
		D			
		320	400	500	630
600	500	20	26	32	42
750	650	22	27	34	44
950	800	24	30	38	50
1150	1000	26	33	41	53
1400	1200	29	37	46	59
1600	1400	40	50	62	78
1800	1600	43	54	67	84
2000	1800	47	58	72	91
2200	2000	49	61	76	95

d	F	Z	X
40	L+70	36	36
50	L+80	41	41
60	L+90	46	46
70	L+90	56	51
80	L+90	56	56

D	320	400	500	630
	α_{max}	15	11	8
H	340	390	455	540

ORDERING EXAMPLE:

MS5-R60-500-1150

Type code

Type alternative

S = for BP -pulley fastener US5

R = for take-up device UR8

T = for take-up bars UR2 and UR3

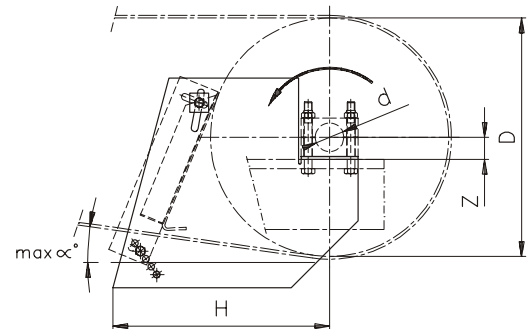
Shaft diameter of pulley d (mm)

Pulley diameter D (mm)

Shell length of pulley L (mm)

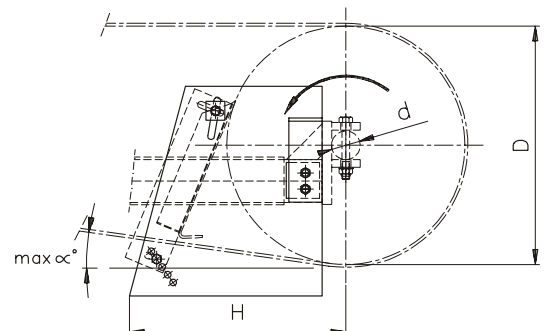
TYPE S

for pulley fastener US5



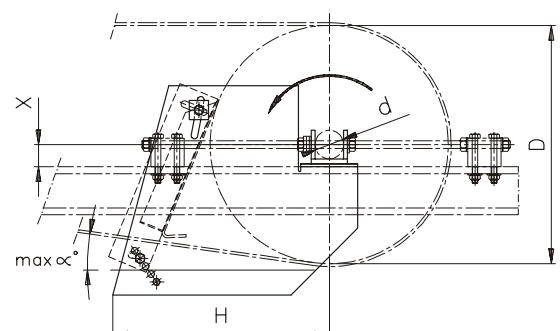
TYPE R

for take-up device UR8



TYPE T

for take-up bars UR2 and UR3



PULLEY CLEANER

MS6

The pulley cleaner MS6 is used with take-up pulleys BP for gravity take-up applications. In this case the pulleys operate on the dirty side of the belt, being thus exposed to material accumulation. The pulley cleaner is fitted under the US5 fastener.

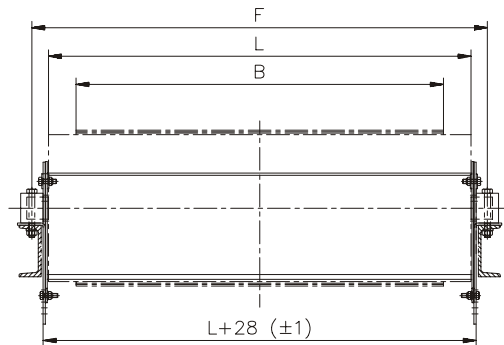
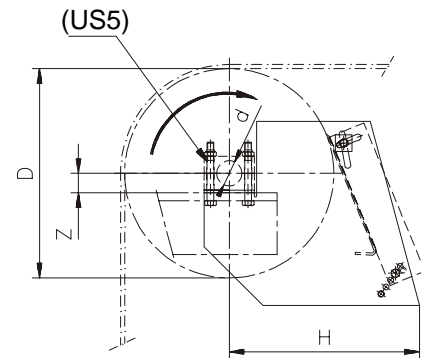
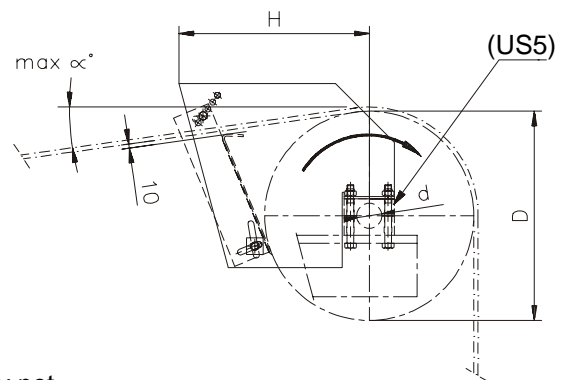
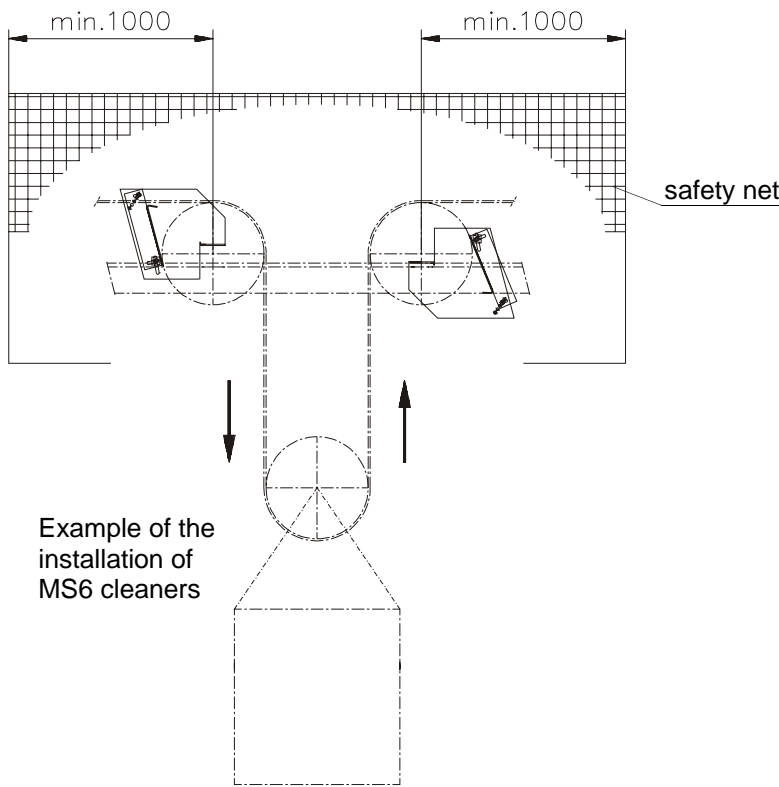
MS6 cleaner must be fitted so that the removed material falls to the open space. The pulley cleaner is installation and maintenance friendly with the installation screws easy to handle.

In extreme applications, i.e. with very sticky materials, rubber lagging is recommended for the pulley-in addition to the MS6 cleaner. Because of the stepless adjustment of the upper section of the material plate the cleaner can be installed accurately.

The gap protection in gravity take-up applications is always arranged by a separate safety net.

ORDERING EXAMPLE: MS6-S60-500-1150

Type code	MS6-S60-500-1150
Type alternative	S = for BP -pulley fastener US5
Shaft diameter of pulley d (mm)	
Pulley diameter D (mm)	
Shell length of pulley L (mm)	



L	B	Weight (kg)			
		D			
		320	400	500	630
600	500	18	22	28	37
750	650	19	24	30	40
950	800	21	26	33	43
1150	1000	23	28	36	46
1400	1200	25	31	40	51
1600	1400	35	44	56	70
1800	1600	38	48	60	76
2000	1800	41	52	65	81
2200	2000	44	55	69	86

d	F	Z
40	L+70	36
50	L+80	41
60	L+90	46
70	L+90	56
80	L+90	56

D	320	400	500	630
α_{max}	15	11	8	7
H	340	390	455	540

PULLEY CLEANER

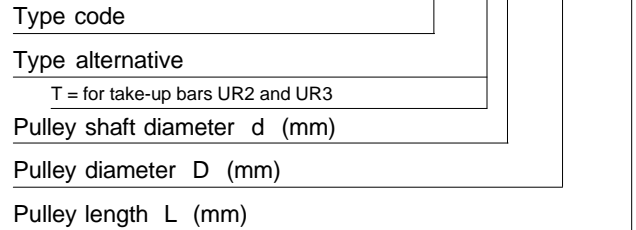
MS8

The MS8 pulley cleaner is used with the BT tail pulleys. The handles of cleaner's plate transport the material to the sides of the belt where it is easy to clean.

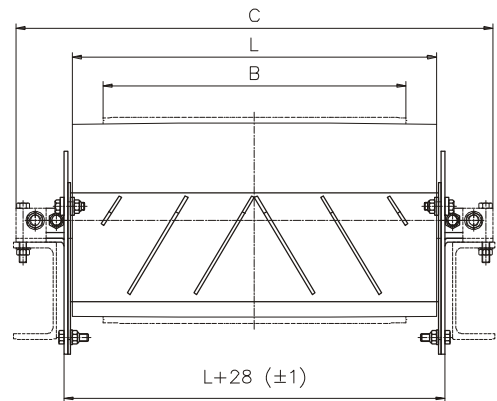
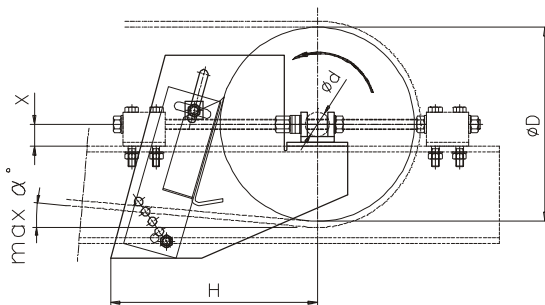
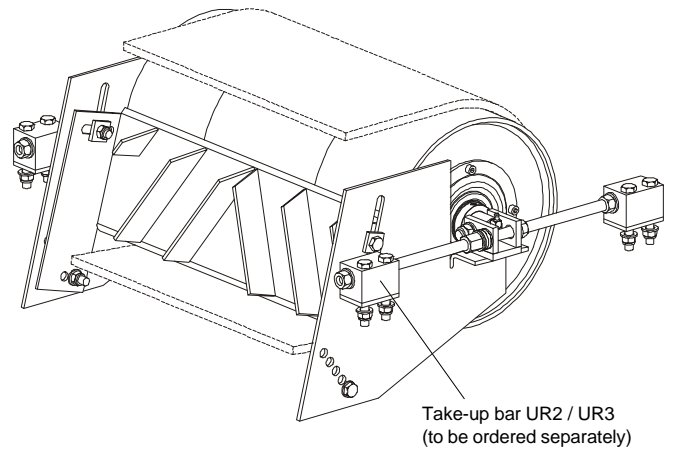
Install the pulley cleaner onto the UR2 and UR3 take-up bar. The cleaner automatically moves along with the pulley while tightening it. The pulley cleaner is installation and maintenance friendly with the installation screws easy to handle.

Position of the cleaner plate can be adjusted by applying a suitable set of fixing holes on the bottom of the cleaner plate assembly and side brackets so the lower edge of the cleaner plate can be installed close to the return belt to serve as a gap cover. The stepless adjustment of the top ensures accurate installation of cleaner plate close to the pulley surface.

ORDERING EXAMPLE: MS8 - T40 - 320 - 1150



D	d	X	H	max a
320	40	36	340	15
	50	41		
400	40	36	390	11
	50	41		



L	B	d	C	J	K	Weight (kg)	
						D320	D400
500	400	40	687	663	623	19.0	23.0
		50	707	677		19.5	23.5
600	500	40	787	763	723	20.5	25.5
		50	807	777		21.0	26.0
750	650	40	937	913	873	22.0	27.0
		50	957	927		22.5	27.5
950	800	40	1137	1113	1073	24.5	30.5
		50	1157	1127		25.0	31.0
1150	1000	40	1337	1313	1273	26.0	32.5
		50	1357	1327		26.5	33.0

