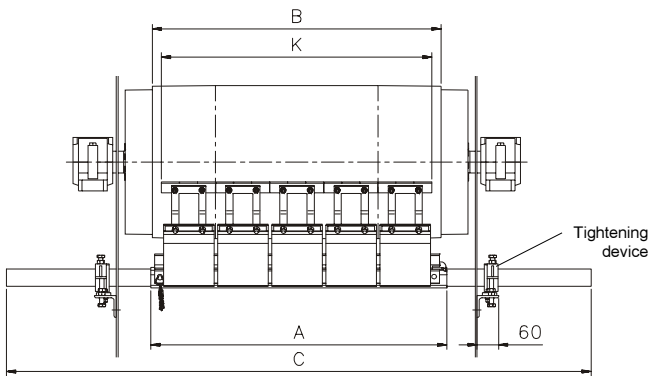


PRE-CLEANER

PIT-BOSS pre-cleaner equipped with hard metal blades is developed for very abrasive materials, for demanding processing industry.

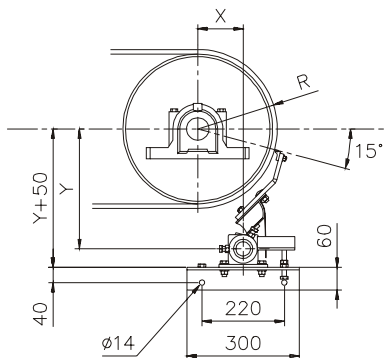
Blade material of tungsten carbide guarantees a good wear resistance even with the weary materials. Open construction prevent the cleaner to be plugged.

Simple torque system and small blade pressures saves the belt. Operation is at its best with the new, smooth belt. Do not install the cleaner on the belt which is teared, with holes or big roughness on the surface.



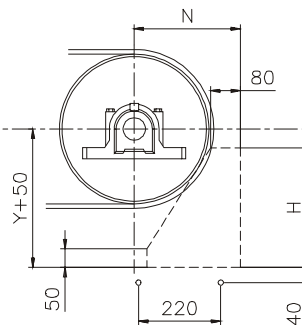
Tightening devices can also be placed inside the chute wall if space is required

Measurements to the conveyor

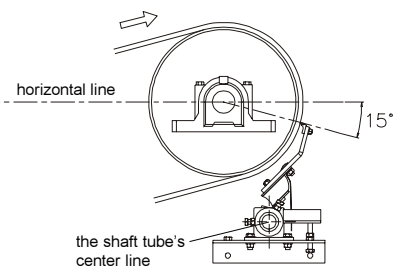


The tightening device can be turned to the desired position in relation to the shaft tube's center line.

Installation opening (if needed)



Inclined conveyors



The tip of the blade should be at the point of 15° below the horizontal line. If necessary, a through hole (ø52) can be made into the conveyor structure for the shaft tube.

D steel surface pulley diameter	R when rubber lagging of the pulley 5 mm and belt thickness 10 mm	X	Y	N	H
320	175	96	314	246	319
400	215	134	325	284	319
500	265	151	391	301	373
630	330	213	408	363	373
800	415	281	475	431	418
1000	515	354	524	534	438

The shaft tube's center line has been calculated with thickness of pulley rubber lagging 5 mm and belt 10 mm. X and Y dimensions need to be check and move case by case according to next example.

Calculation example

Values: Pulley diameter 500 mm, thickness of rubber lagging 8 mm and belt 20 mm ⇒ R = 278 mm
Difference with the measure given on the table R is 278 - 265 = 13 mm

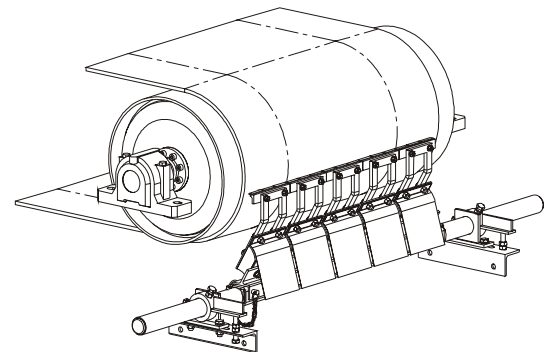
In this case X and Y dimensions to be used are:

X dimension 151 + 13 x 0.966 = **163.5 mm** (0.966 = X constant, which is used when moving X dimension)
Y dimension 391 + 13 x 0.259 = **394 mm** (0.259 = Y constant, which is used when moving X dimension)

PIT-BOSS

ORDERING EXAMPLE: PIT-BOSS 500 - 1200 - T X A

Type code	
Pulley diameter D (mm)	
Belt width B (mm)	
Blade material	T = HARD METAL (tungsten carbide)
Fixing method	X = BASIC FIXINGS
Profile bar for blades	A = ALUMINIUM



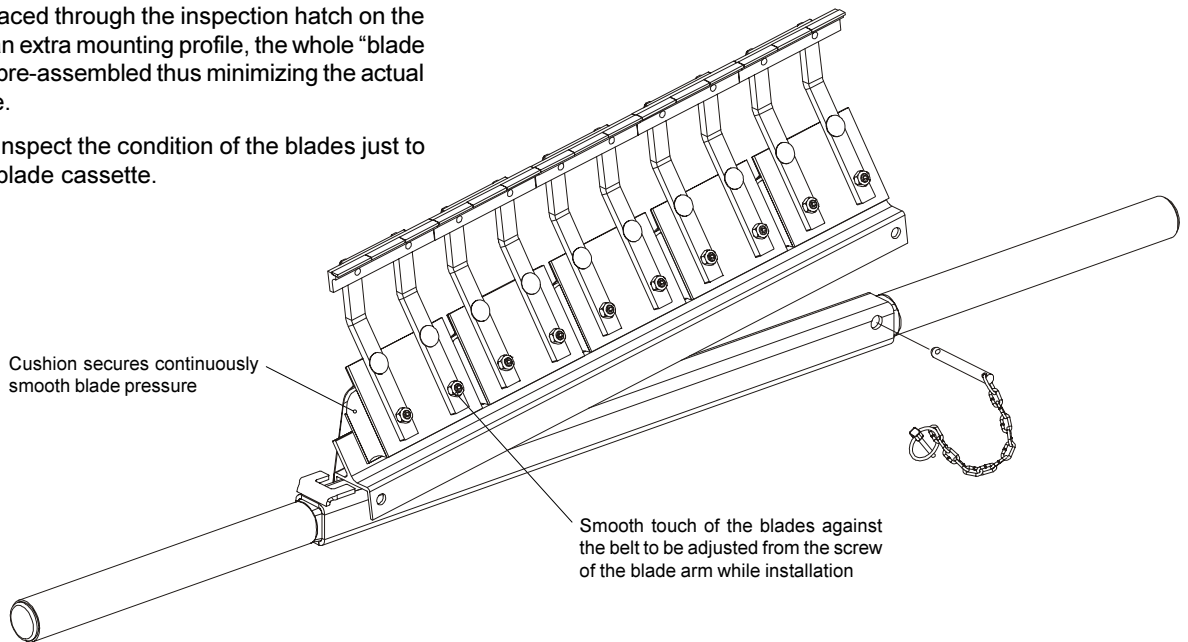
B	K	A	C	Blade (pcs)	Weight (kg)
400	300	370	1170	2	19
500	450	520	1320	3	23
650	600	670	1470	4	28
800	750	820	1620	5	32
1000	900	970	1770	6	36
1200	1050	1120	2020	7	41
1400	1350	1420	2320	9	50
1600	1500	1570	2470	10	54
1800	1650	1720	2620	11	57
2000	1950	2020	2920	13	67

With the bigger pulley diameters and belt widths please contact our technical service department.

Detachable blade cassette

The detachable blade cassette of Pit-Boss pre-cleaners is easy to be replaced through the inspection hatch on the chute wall. With an extra mounting profile, the whole "blade cassette" can be pre-assembled thus minimizing the actual replacement time.

It is very easy to inspect the condition of the blades just to lift up the whole blade cassette.



Ordering codes for spare parts

1. Blade part

ORDERING EXAMPLE: B - LL - T - 150

Type code

2. Blade arm

ORDERING EXAMPLE: PB - V - A

Type code

Arm model

- A = PULLEY DIAMETERS 320 and 400 (mm)
- B = PULLEY DIAMETERS 500 and 630 (mm)
- C = PULLEY DIAMETER 800 (mm)
- D = PULLEY DIAMETER 1000 (mm)

3. Cushion

ORDERING EXAMPLE: B - SC - 150

Type code

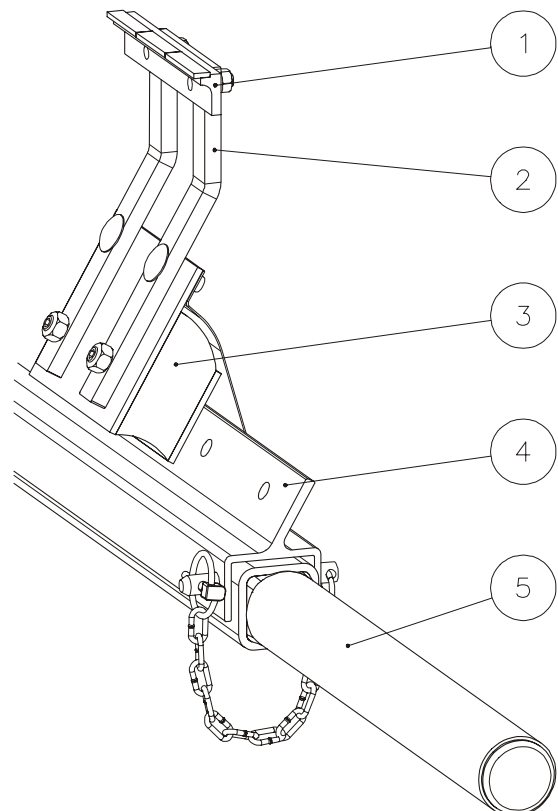
4. Profile bar for blades

ORDERING EXAMPLE: MEP7 - P - 800

Type code

Belt width B (mm)

Profile material aluminium.



5. Shaft tube

ORDERING EXAMPLE: MEP1 - T1 - 800

Type code

Belt width B (mm)