

# CARVING MULTIBLADE CLEANER

# BEP31

The BEP31 is the right choice for the universal purpose cleaner because of the simple and reliable construction.

Tension arm of the cleaner can be turned 360° with respect to the frame pipe in which case the placing to the old constructions is easy.

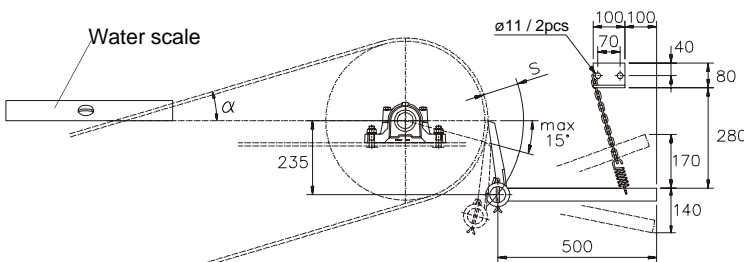
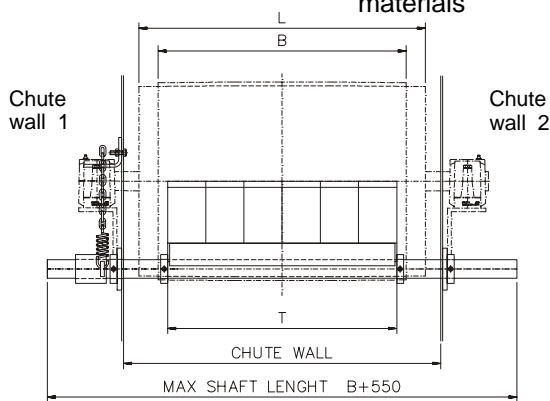
There is a right choice for every material from the large number of blade alternatives: U = normal materials  
A = weary materials  
S = extremely weary materials

ORDERING EXAMPLE: **BEP31 - 1200 - U - X**

Type code	BEP31
Belt width B (mm)	1200
Scraper blade material	U
Fixing alternatives	X

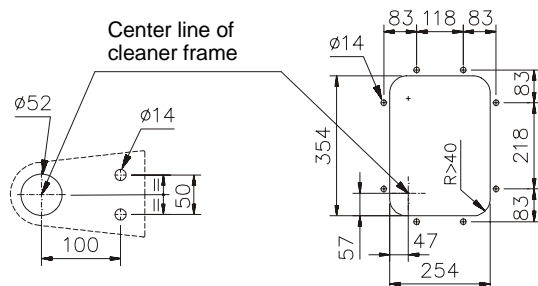
U = polyurethane  
A = polyurethane filled with al.oxide (Al<sub>2</sub>O<sub>3</sub>)  
S = sintered (scraper blade inside the urethane)

X = base fixings  
E = universal fixings  
L = with inspection hatch



### INCLINED CONVEYORS

Top of the blade must be on the horizontal line which goes trough center point of pulley (when belt speed is low, 15 degrees downwards from horizontal line is allowed)



Chute wall 2

Chute wall 1 (when equipped with hatch)

Table 2

D	S
320	124
400	117
500	112
630	105
800	100
1000	100

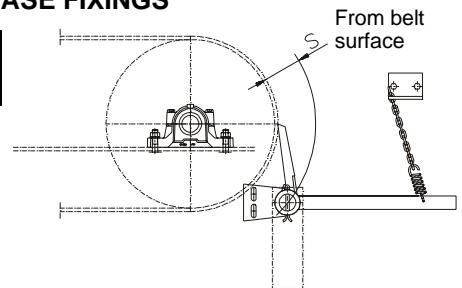
Table 3

Ordering code for wearable parts

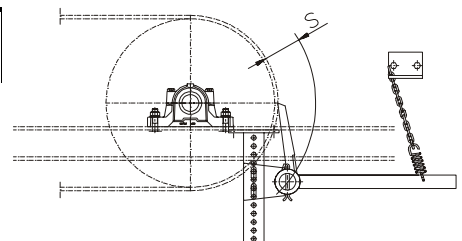
Material	Ordering example
- U	BEP35 - U
- A	BEP35 - A
- S	BEP35 - S

The required number of wearable parts for the whole cleaner is shown in table 1.

### WITH BASE FIXINGS



### WITH UNIVERSAL FIXINGS



### WITH INSPECTION HATCH

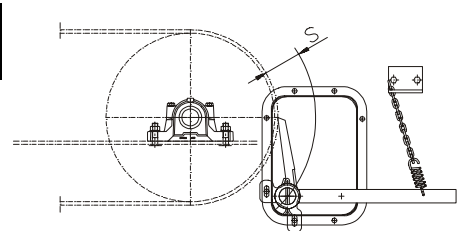


Table 1

B	L	T	Weight (kg)	Wear parts (pcs)
500	600	400	21	4
650	750	600	24	6
800	950	700	27	7
1000	1150	900	30	9
1200	1400	1100	34	11
1400	1600	1300	38	13
1600	1800	1500	41	15
1800	2000	1700	45	17
2000	2200	1900	49	19