

RETURN BELT CLEANER

MR1

The diagonal return belt cleaner MR1 effectively wipes the material dropped on to the belt. The diagonal position makes it possible to move the material to either side of the belt. The hot galvanized construction is long lasting and the replacement of the wearable parts is easy due to the friction joint.

ORDERING EXAMPLE:

MR1 - 1000 - U

Type code

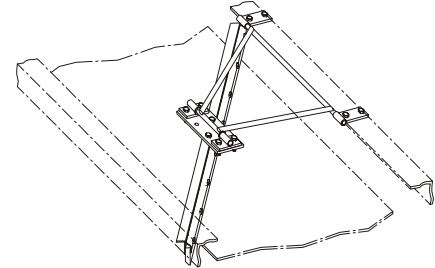
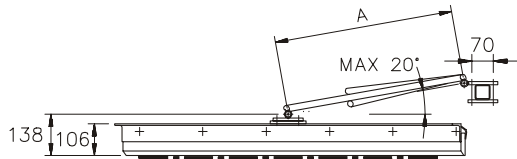
Belt width B (mm)

Scraper blade material

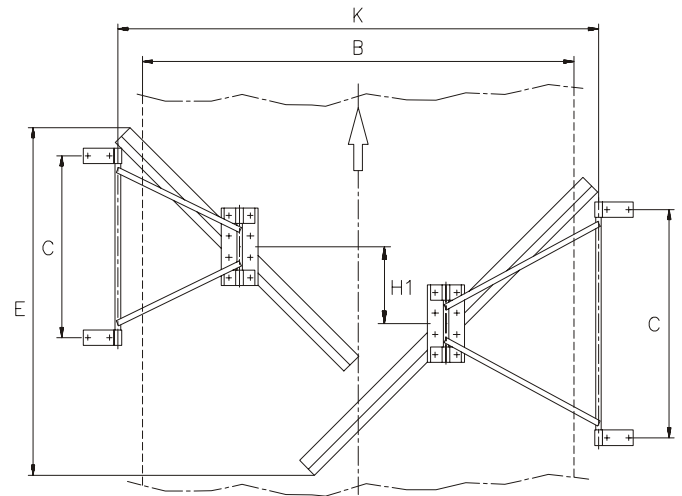
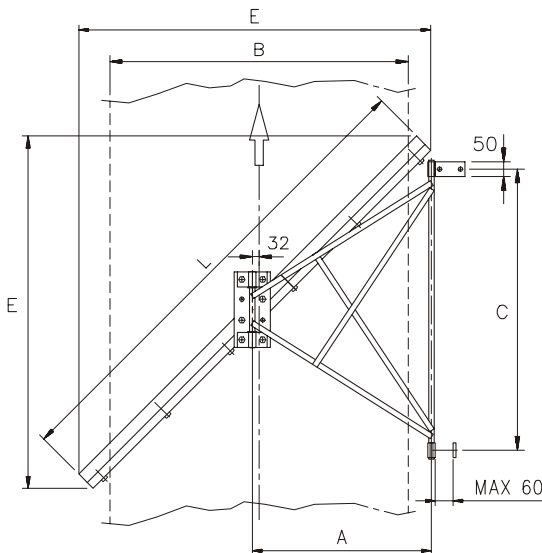
U = polyurethane

A = polyurethane filled with aluminium oxide (Al₂O₃)

M = polyethene (UHMWPE)



For belt widths over 1200 mm, two separate wipers are to be ordered using the type codes mentioned in the table below.

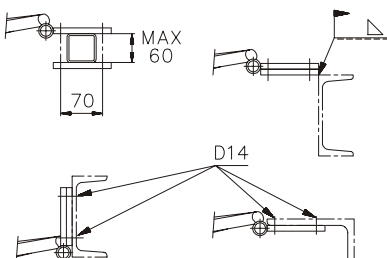


B	A	C	E	L	Weight (kg)
400	270	420	543	700	13,0
500	320	450	614	800	14,0
650	395	600	790	1050	16,5
800	495	750	967	1300	19,0
1000	600	950	1179	1600	25,5
1200	725	1070	1391	1900	29,0

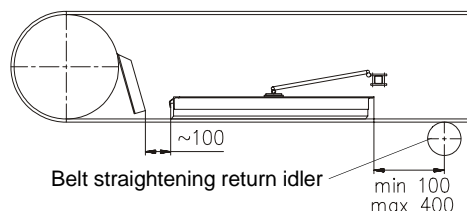
B	Wipers (two) B	E	H1	K
1400	1 x B650 and 1xB800	1080	250	1560
1600	2 x B800	1275	320	1770
1800	1 x B800 and 1xB1000	1615	250	1960
2000	2 x B1000	1430	270	2160

FASTENING ALTERNATIVES

Fastener elements can be turned to different positions depending on the location.



INSTALLATION ON THE CONVEYOR



SPARE PARTS

Spare part blades to be ordered by metres. See length L of the blade from the table. The most economic way is to buy the blade as 3 meter long bars.

Material code of the scraper blade	Ordering code of the scraper blade
U	MR5-U-(Length L)
A	MR5-A-(Length L)
M	MR5-M-(Length L)

RETURN BELT PLOUGH

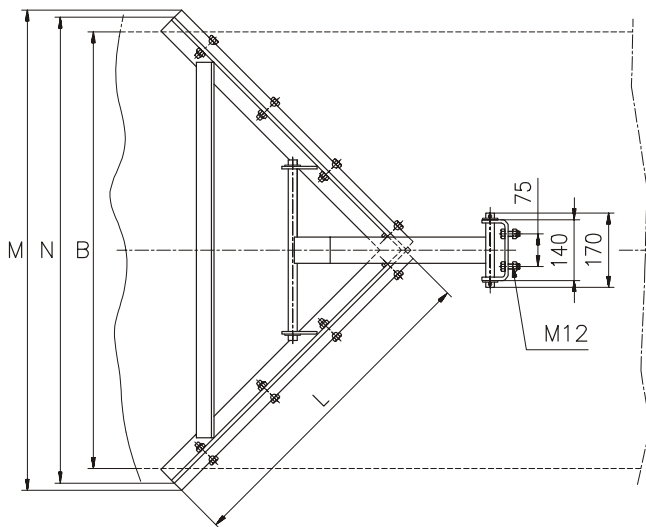
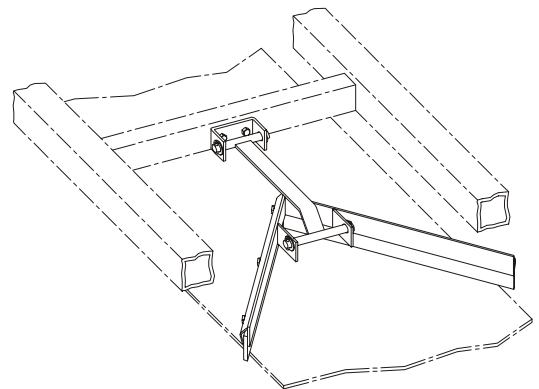
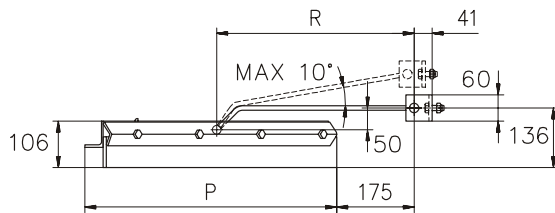
MR2

The plough-type return belt cleaner MR2 effectively cleans the dropped material on the belt. Due to the jointed support bar the plough follows the belt surface well. The scraper blade is fixed to the frame using a friction joint enabling an easy and quick replacement.

ORDERING EXAMPLE: MR2 - 1200 - U

Type code	
Belt width B (mm)	
Scraper blade material	

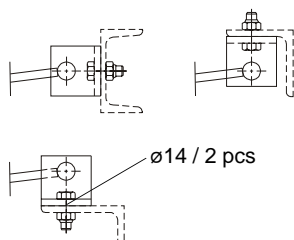
- U = polyurethane
- A = polyurethane filled with aluminium oxide (Al₂O₃)
- M = polyethene (UHMWPE)



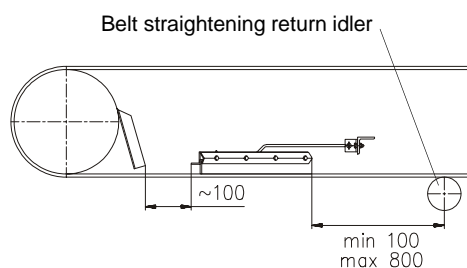
B	L	M	N	P	R	Weight (kg)
500	390	594	574	298	343	9.0
650	500	749	730	376	343	10.5
800	600	891	871	447	343	12.5
1000	750	1094	1075	573	452	18.5
1200	920	1335	1315	693	452	22.5
1400	1060	1533	1513	806	452	31.0
1600	1200	1731	1711	905	452	35.0

FASTENING ALTERNATIVES

Fastener elements can be turned to different positions depending on the location and steel construction.



INSTALLATION ON THE CONVEYOR



SPARE PARTS

Spare part blades to be ordered by metres. See length L of the blade from the table. The most economic way is to buy the blade as 3 meter long bars.

Material code of the scraper blade	Ordering code of the scraper blade
U	MR5-U-(Length L); 2 pcs
A	MR5-A-(Length L); 2 pcs
M	MR5-M-(Length L); 2 pcs