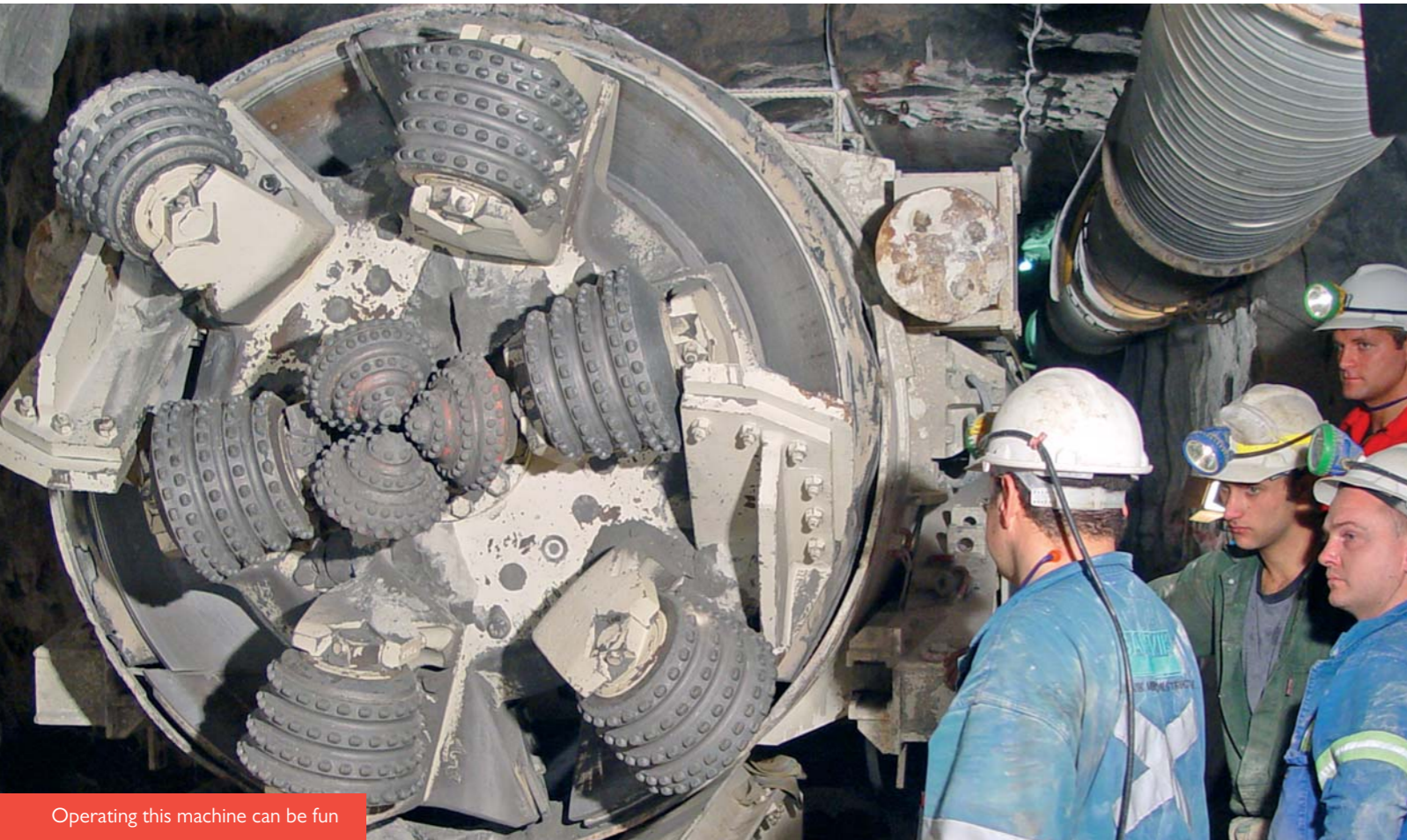


Sandvik Boxhole Borer MD320 trackbound in Action

A small compact TBM for steep inclines





Operating this machine can be fun

Sandvik Boxhole Borer MD320 trackbound

The Box Hole Borer MD 320 is designed like a small TBM for steep inclines. The field of application is for short connection holes between main haulage level and stope.

The holes can be used for ore passes as well as for travel ways or ventilation (or other mine related purposes, where a circular hole with a smooth surface is beneficial). The advantage of this system is the blind boring concept – there is no need for developed space at the end of the hole – which makes the drill operation independent from the stope development.

The machine features a very compact design and arrives in a launching tube (either rail bound or crawler mounted). After alignment, the borer starts collaring and to climb out of the tube. After finishing the hole, the machine walks down the bored hole and arrives in the launching tube which is the transport cradle for repositioning of the equipment. The machine is operated from a separate operators place at the power pack which provides safe and convenient working conditions for the operator.

Technical data MD320*

Boring diameter	1600 mm	Total installed power	300 kW
Inclination of drilled hole max.	70 °	Hydraulic powerpack	280 kW
Length of hole: max	100 m	Aux. devices appr.	20 kW
Boring stroke	500 mm	Weight of boring unit	
Cutterhead speed	5 - 20 rpm	incl. backfalldevice appr.	11.5 to
Cutterhead drive	hydraulic	Weight of launch unit appr.	10 to
Nom. Thrust per cutter	190 kN		
Total Thrustforce	1400 kN		

* All rights for technical modification are reserved



From vision to reality

Unique features of the MD320

- Compact design of the unit
- Easy relocation on rail bound cars
- Dimensions to fit in most of the cages without being disassembled
- Correction of drill direction is possible
- Discharge of the muck into hoppers by means of vacuum system



Sandvik Boxhole Borer MD 320

