

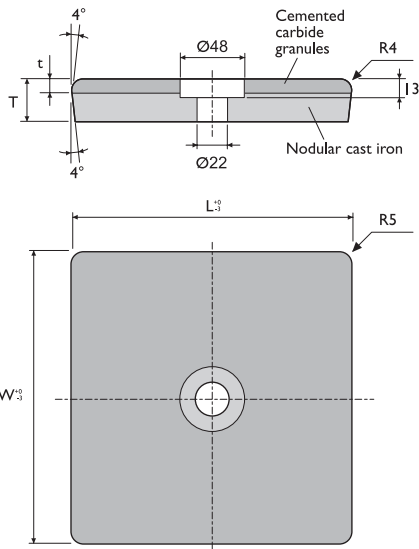
HX900 cast-in-carbide standard liners



HX900 LINERS - EIGHT TIMES MORE WEAR RESISTANT

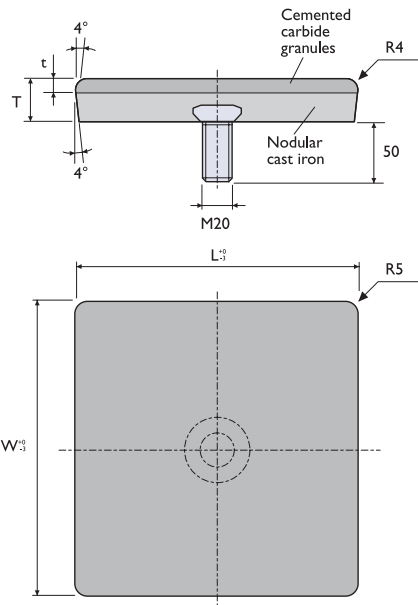
In ducts, troughs, chutes and pipes, wear liners are often subjected to heavy impact and abrasive wear. In these environments HX900 cast-in-carbide liners are an excellent choice.

When nine HX900 liners were installed in a chute (transporting iron ore and minerals) at Thyssen Krupp Steel AG, Duisburg, they proved to be over eight times more wear resistant than the conventional steel liners in the same chute. With the HX900 liners installed, cost savings of over 40% were achieved. The HX900 lasted for six months, a period with no maintenance needed.



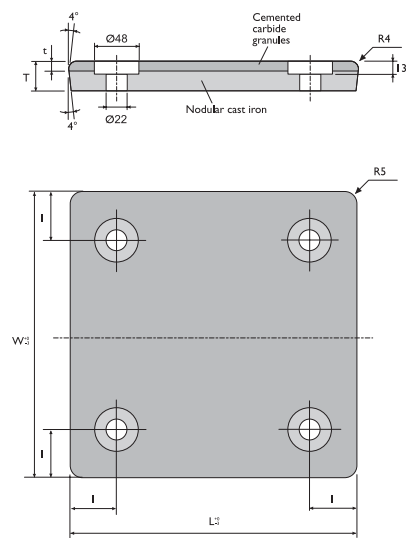
HX900 LINERS WITH ONE HOLE

Length	Width	Total thickness	Granular thickness	Order codes
<i>L mm (in)</i>	<i>W mm (in)</i>	<i>T mm (in)</i>	<i>t mm (in)</i>	
200 (7.87)	200 (7.87)	30 (1.18)	10 (0.39)	SA 3564 0 CS
200 (7.87)	200 (7.87)	20 (0.79)	8 (0.32)	SA 3564 2 CS
250 (9.84)	250 (9.84)	30 (1.18)	10 (0.39)	SA 3557 0 CS
250 (9.84)	250 (9.84)	20 (0.79)	8 (0.32)	SA 3557 2 CS
300 (11.81)	300 (11.81)	30 (1.18)	10 (0.39)	SA 3558 0 CS
300 (11.81)	300 (11.81)	20 (0.79)	8 (0.32)	SA 3558 2 CS



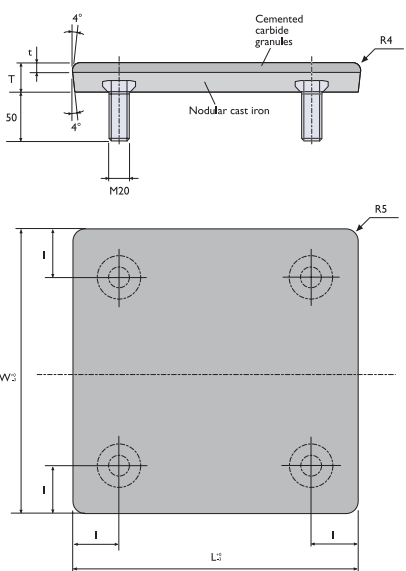
HX900 LINERS WITH ONE BOLT

Length	Width	Total thickness	Granular thickness	Order codes
<i>L mm (in)</i>	<i>W mm (in)</i>	<i>T mm (in)</i>	<i>t mm (in)</i>	
200 (7.87)	200 (7.87)	30 (1.18)	10 (0.39)	SA 3564 1 CS
200 (7.87)	200 (7.87)	20 (0.79)	8 (0.32)	SA 3564 3 CS
250 (9.84)	250 (9.84)	30 (1.18)	10 (0.39)	SA 3557 1 CS
250 (9.84)	250 (9.84)	20 (0.79)	8 (0.32)	SA 3557 3 CS
300 (11.81)	300 (11.81)	30 (1.18)	10 (0.39)	SA 3558 1 CS
300 (11.81)	300 (11.81)	20 (0.79)	8 (0.32)	SA 3558 3 CS



HX900 LINERS WITH FOUR HOLES

Length	Width	Length, edge to hole	Total thickness	Granular thickness	Order codes
<i>L mm (in)</i>	<i>W mm (in)</i>	<i>l mm (in)</i>	<i>T mm (in)</i>	<i>t mm (in)</i>	
400 (15.75)	300 (11.81)	50 (1.97)	30 (1.18)	10 (0.39)	SA 3533 0 CS
400 (15.75)	300 (11.81)	50 (1.97)	20 (0.79)	8 (0.32)	SA 3533 2 CS
300 (11.81)	300 (11.81)	50 (1.97)	30 (1.18)	10 (0.39)	SA 3534 0 CS
300 (11.81)	300 (11.81)	50 (1.97)	20 (0.79)	8 (0.32)	SA 3534 2 CS
300 (11.81)	300 (11.81)	75 (2.95)	30 (1.18)	10 (0.39)	SA 3650 0 CS
300 (11.81)	300 (11.81)	75 (2.95)	20 (0.79)	8 (0.32)	SA 3650 2 CS



HX900 LINERS WITH FOUR BOLTS

Length	Width	Length edge to bolt	Total thickness	Granular thickness	Order codes
<i>L mm (in)</i>	<i>W mm (in)</i>	<i>l mm (in)</i>	<i>T mm (in)</i>	<i>t mm (in)</i>	
400 (15.75)	300 (11.81)	50 (1.97)	30 (1.18)	10 (0.39)	SA 3533 1 CS
400 (15.75)	300 (11.81)	50 (1.97)	20 (0.79)	8 (0.32)	SA 3533 3 CS
300 (11.81)	300 (11.81)	50 (1.97)	30 (1.18)	10 (0.39)	SA 3534 1 CS
300 (11.81)	300 (11.81)	50 (1.97)	20 (0.79)	8 (0.32)	SA 3534 3 CS
300 (11.81)	300 (11.81)	75 (2.95)	30 (1.18)	10 (0.39)	SA 3650 1 CS
300 (11.81)	300 (11.81)	75 (2.95)	20 (0.79)	8 (0.32)	SA 3650 3 CS

R4 = Edge radius 4 mm

R5 = Corner radius 5 mm

M20 x 50 bolts are used as standard. Other dimensions can be ordered on request.

