

Sandvik DP900i

Surface Top Hammer Drills



Sandvik DP900i is intelligent, self-propelled, self-contained, crawler based surface drilling rig equipped with a cabin and a rod changer.

DP900i with practical intelligence fits perfectly for production drilling in large quarries or open pit mines and construction work sites. It suits well also for wall control and development works. To customize the rig it can be equipped with a variety of options to meet special requirements.

Hole Diameter:	89 - 127 mm (3 ½" - 5")
Rock Tools:	51 and 60 mm 2" and 2 ¾") rods
Rock Drill:	21 kW
Engine Output:	205 kW
Flushing Air:	9,6 m ³ /min, up to 10 bar
Production Capacity:	1,5 Mt/year
Total Weight	21 500 kg

STANDARD COMPONENTS

Rock drill	HL 1060T, hydraulic
Feed	LF 1520
Rod changer	RC 1614
Boom	ZB 1550 H, telescopic
Carrier	FL 6, oscillating
Powerpack	Diesel driven, hydraulic pumps and on board compressor
Hydraulic system	Electric load sensing
Cabin	Ergo cool
Dust collector	DC 1520 H, hydraulic
Working lights	15 pcs
Gauge set	For accumulator pressure checking
Reversing alarm	
Movable drill steel support	
Suction shut down for water holes	
Flushing control automatics	
Shank replacement tool	
Manuals	Service and spare parts manuals: 1 x paper copy 1 x CD-ROM (ToolMan)

SELECTION OF OPTIONS

1.	Automatic feed alignment
2.	Feed alignment instrument for vertical holes and hole depth measuring
3.	Feed alignment instrument for inclined holes and hole depth measuring
4.	Laser based depth measuring system
5.	One hole automatic drilling to depth with remote stop (includes hose reel)
6.	SanRemo remote monitoring system
7.	Radio remote for tramming and boom movements
8.	Hydraulic winch with radio remote control for winch/ tramming and boom movements
9.	Chain Feed CF 12 w/o hose reel
10.	Hose reel (includes longer feed for 6100 mm (20') starter rod)
11.	Air conditioning and heating
12.	Vacuum cleaner for cabin
13.	Radio and CD player
14.	Cooler bag
15.	Roller shutter for cabin windows
16.	Xenon lights 9 pcs
17.	Fuel heater for cabin, hydraulic oil and engine
18.	Power extractor
19.	Readiness for Power extractor
20.	Rollers for rod changer RC 1514
21.	Water injection system
22.	Flap feeder for dust collector
23.	Dustmizer (includes water injection system and flap feeder)

THE JAWS FOR DRILL STEELS

Drill steel type	Drill steel diameter	Recommended hole diameter
Extension rods / MF rods	51 mm 2"	89 – 127 mm 3 1/2" – 5"
MF rods	60 mm 2 3/8"	89 – 127 mm 3 1/2" – 5"
Pilot tube	76 mm 3"	89 – 102 mm 3 1/2" – 4"
Pilot tube	87 mm 3 1/2"	102 – 127 mm 4" – 5"
Extension rods / MF rods	51 mm 2"	89 – 127 mm 3 1/2" – 5"

ADJUSTMENT INFORMATION FOR DELIVERY

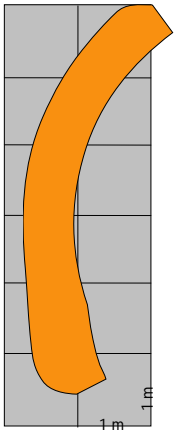
Extension rod lengths

3 660 mm	12'
4 270 mm	14'

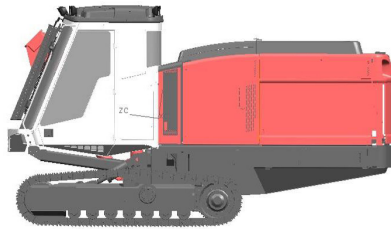
24.	Rod greasing
25.	Rod greasing with 5 gallon bucket
26.	Sandvik central lubrication system
27.	Antifreeze for air lines
28.	Towing hook
29.	Hydraulic ground support HM 75
30.	Horizontal drilling support
31.	Feed support for soft ground
32.	Electric filling pump for refuelling
33.	Fast fill connection for fuel and water tanks
34.	Fast fill connection for engine coolant, hydraulic oil, engine oil
35.	Sanrock Mini H hydraulic bit grinder
36.	Manual fire suppression system
37.	Automatic fire suppression system (for hot climate only)
38.	Sampling device
39.	Reversing camera (two cameras)
40.	Single bar grouser plates (310 mm)
41.	Guides for grousers
42.	Kit for alternative steels
43.	Tube drilling kit
44.	Extra manuals
45.	First service kit for DP 900i
46.	Special tools for HL1060T, field kit
47.	Special tools for HL1060T, complete



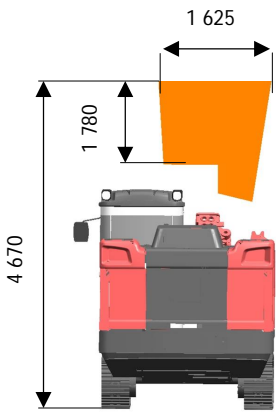
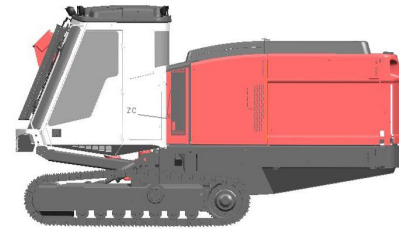
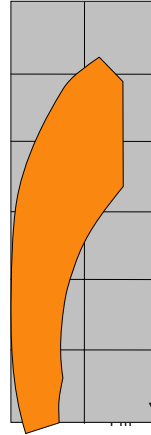
COVERAGE AREA



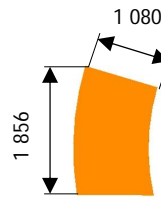
Coverage area
horizontal drilling, sideways



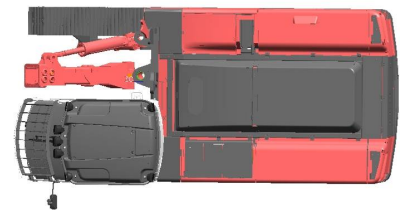
Coverage area
vertical drilling



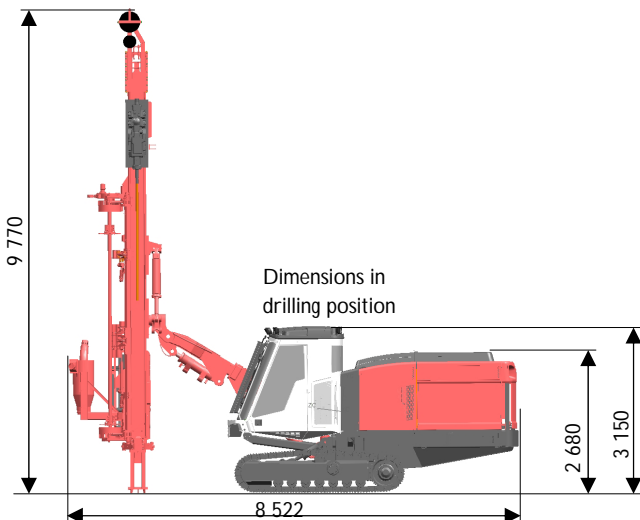
Coverage area
horizontal drilling, forwards



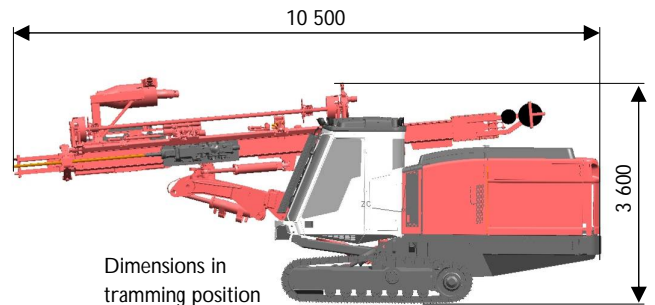
Coverage area
vertical drilling



TRAMMING AND TRANSPORT DIMENSIONS



Dimensions in
drilling position



Dimensions in
tramming position

Weight	21 500 kg
Width	2.5 m
Height	3.2 m
Total length	11.5 m