

# Sandvik DP1100i

## Surface Top Hammer Drills



Sandvik DP1100i is intelligent, self-propelled, self-contained, crawler based surface drilling rig equipped with a cabin and a rod changer.

DP1100i with practical intelligence fits perfectly for production drilling in large quarries or open pit mines and construction work sites. It suits well also for wall control and development works. To customize the rig it can be equipped with a variety of options to

|                      |   |
|----------------------|---|
| Hole Diameter:       | 89 - 140 mm<br>(3 1/2" - 5 1/2")  |
| Rock Tools:          | 51 and 60 mm (2" and 2 3/8") rods or 76 and 87 mm (3" and 3 1/2") tubes |
| Rock Drill:          | 25 kW   |
| Engine Output:       | 205 kW  |
| Flushing Air:        | 14 m <sup>3</sup> /min,<br>up to 10 bar                                 |
| Production Capacity: | 1,5 Mt/year   |
| Total Weight         | 21 700 kg   |

## STANDARD COMPONENTS

|                                   |  |
|-----------------------------------|--|
| Rock drill                        | HL 1060T, hydraulic  |
| Feed                              | LF 1520  |
| Rod changer                       | RC 1614  |
| Boom                              | ZB 1550 H, telescopic  |
| Carrier                           | FL 6, oscillating  |
| Powerpack                         | Diesel driven, hydraulic pumps and on board compressor                     |
| Hydraulic system                  | Electric load sensing  |
| Cabin                             | Ergo cool  |
| Dust collector                    | DC 1520 H, hydraulic   |
| Working lights                    | 15 pcs   |
| Gauge set                         | For accumulator pressure checking  |
| Reversing alarm                   |  |
| Movable drill steel support       |  |
| Suction shut down for water holes |  |
| Flushing control automatics       |  |
| Shank replacement tool            |  |
| Manuals                           | Service and spare parts manuals:<br>1 x paper copy<br>1 x CD-ROM (ToolMan) |

## SELECTION OF OPTIONS

|     |  |
|-----|--|
| 1.  | Automatic feed alignment   |
| 2.  | Feed alignment instrument for vertical holes and hole depth measuring            |
| 3.  | Feed alignment instrument for inclined holes and hole depth measuring            |
| 4.  | Laser based depth measuring system   |
| 5.  | One hole automatic drilling to depth with remote stop (includes hose reel)       |
| 6.  | SanRemo remote monitoring system   |
| 7.  | Radio remote for tramming and boom movements                                     |
| 8.  | Hydraulic winch with radio remote control for winch/ tramming and boom movements |
| 9.  | Standard feed with hose reel   |
| 10. | Hose reel (includes longer feed for 6100 mm (20') starter rod)                   |
| 11. | Air conditioning and heating   |
| 12. | Vacuum cleaner for cabin   |
| 13. | Radio and CD player  |
| 14. | Cooler bag   |
| 15. | Roller shutter for cabin windows   |
| 16. | Xenon lights 9 pcs   |
| 17. | Fuel heater for cabin, hydraulic oil and engine                                  |
| 18. | Power extractor  |
| 19. | Readiness for Power extractor  |
| 20. | Rollers for rod changer RC 1514  |
| 21. | Flap feeder for dust collector   |
| 22. | Water injection system   |
| 23. | Dustmizer (includes water inj. system & flap feeder)                             |

## THE JAWS FOR DRILL STEELS

| Drill steel type         | Drill steel diameter | Recommended hole diameter      |
|--------------------------|----------------------|--------------------------------|
| Extension rods / MF rods | 51 mm<br>2"          | 89 - 127 mm<br>3 1/2" - 5"     |
| MF-rods                  | 60 mm<br>2 3/8"      | 102 - 140 mm<br>4" - 5 1/2"    |
| Pilot tube               | 76 mm<br>3"          | 89 - 127 mm<br>3 1/2" - 5"     |
| Pilot tube               | 87 mm<br>3 1/2"      | 102 - 140 mm<br>4" - 5 1/2"    |
| Tubes                    | 76 mm<br>3"          | 89 - 140 mm<br>3 1/2" - 5 1/2" |
| Tubes                    | 87 mm<br>3 1/2"      | 102 - 140 mm<br>4" - 5 1/2"    |

## ADJUSTMENT INFORMATION FOR DELIVERY

### Rotation motor

Rotation motor OMT 400 for 89 - 127 mm,  
3 1/2" - 5" holes

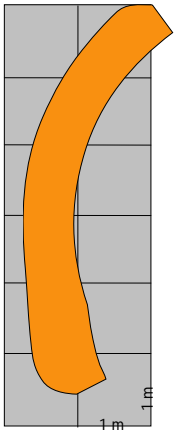
Rotation motor OMT 500 for 127 - 140 mm,  
5" - 5 1/2" holes

### Extension rod lengths

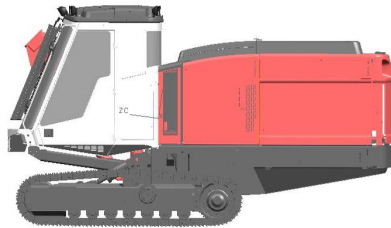
|          |     |
|----------|-----|
| 3 660 mm | 12' |
| 4 270 mm | 14' |

|     |  |
|-----|--|
| 24. | Rod greasing   |
| 25. | Rod greasing wit 5 gallon bucket                                   |
| 26. | Sandvik central lubrication system                                 |
| 27. | Antifreeze for air lines   |
| 28. | Towing hook  |
| 29. | Hydraulic ground support HM 75                                     |
| 30. | Horizontal drilling support  |
| 31. | Feed support for soft ground                                       |
| 32. | Electric filling pump for refuelling                               |
| 33. | Fast fill connection for fuel and water tanks                      |
| 34. | Fast fill connection for engine coolant, hydraulic oil, engine oil |
| 35. | Sanrock Mini H hydraulic bit grinder                               |
| 36. | Manual fire suppression system                                     |
| 37. | Automatic fire suppression system (for hot climate only)           |
| 38. | Sampling device  |
| 39. | Reversing camera (two cameras)                                     |
| 40. | Single bar grouser plates (310 mm)                                 |
| 41. | Guides for grousers  |
| 42. | Kit for alternative steels   |
| 43. | Tube drilling kit  |
| 44. | Shank replacement tool   |
| 45. | Extra manuals  |
| 46. | First service kit for DP 1100i                                     |
| 47. | Special tools for HL 1060T, field kit                              |
| 48. | Special tools for HL 1060T, complete                               |

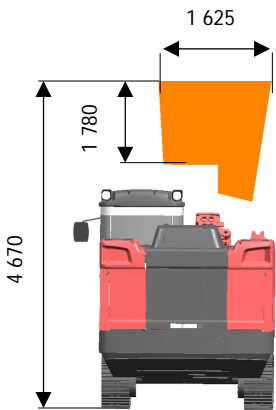
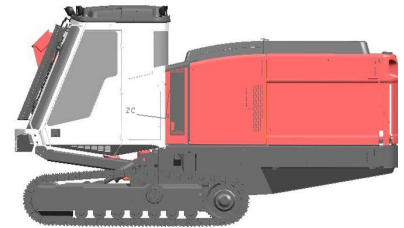
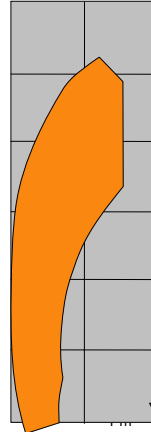
## COVERAGE AREA



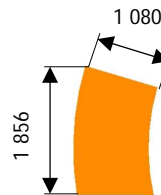
Coverage area  
horizontal drilling, sideways



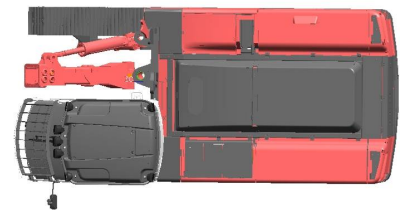
Coverage area  
vertical drilling



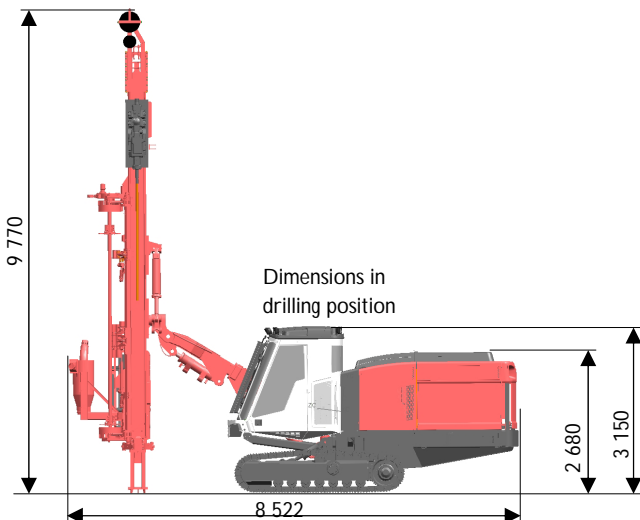
Coverage area  
horizontal drilling, forwards



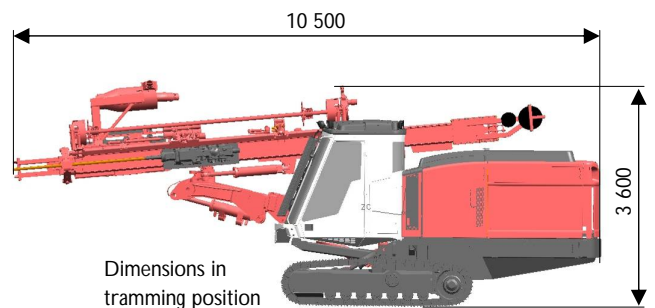
Coverage area  
vertical drilling



## TRAMMING AND TRANSPORT DIMENSIONS



Dimensions in  
drilling position



Dimensions in  
tramming position

|              |           |
|--------------|-----------|
| Weight       | 21 700 kg |
| Width        | 2.5 m     |
| Height       | 3.2 m     |
| Total length | 11.5 m    |