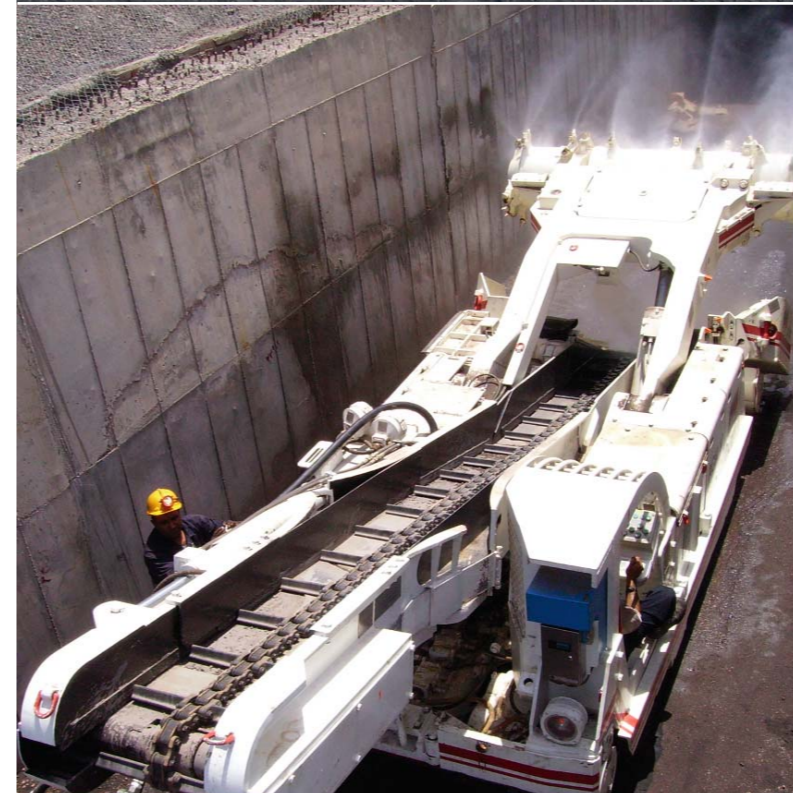


# Sandvik Continuous Miner MC 250 in Action

Designed for coal production in low seams





Compact and highly maneuverable

# Sandvik Continuous Miner MC250

The MC 250 is designed for coal production in narrow heading conditions and place change situations.

### Technical data MC250\*

General:			Loading and conveying:	
Total length, approx.	(m)	9.6	Loading device	spinners
Total weight, approx..	(t)	43	Loading capacity	(t / min) 15
Machine height	(m)	2.9	Loading width	(mm) 2.5
Width across chassis	(mm)	2.9	Conveyor width	(mm) 600
Ground clearance	(mm)	220	Conveyor capacity	(t / min) 20
Total installed power at 1000V, 60 Hz	(kW)	260		
Cutting Profile:			Tram speed slow / intermediate / high	(m / min) 0 - 13
Cutting width	(m)	2.9	Max. tram speed	(m / min) 13
Drum diameter	(m)	0.95	Ground pressure	(N / cm <sup>2</sup> ) 11
Minimum cutting height	(m)	1.4		
Maximum cutting height	(m)	3.6		
Cuttable UCS	(Mpa)	15 - 30		
Cutter motor power	(kW)	132		

All dimensions and weights are approximate  
Please see technical specification for details  
\* All rights for technical modification are reserved



From vision to reality

### Unique features of the MC250

- High tramping speed of up to 20 m/min
- Optional radio remote control
- Compact design for narrow mining conditions
- Low pick tip speed reduces dust generation
- High pressure water sprays (with optional booster pump)
- Variable speed drive (VSD) for controlled sump in process
- Optional on board scrubber
- Load sensing hydraulics
- Water inter lock with cutter motor



Sandvik Continuous Miner MC250

