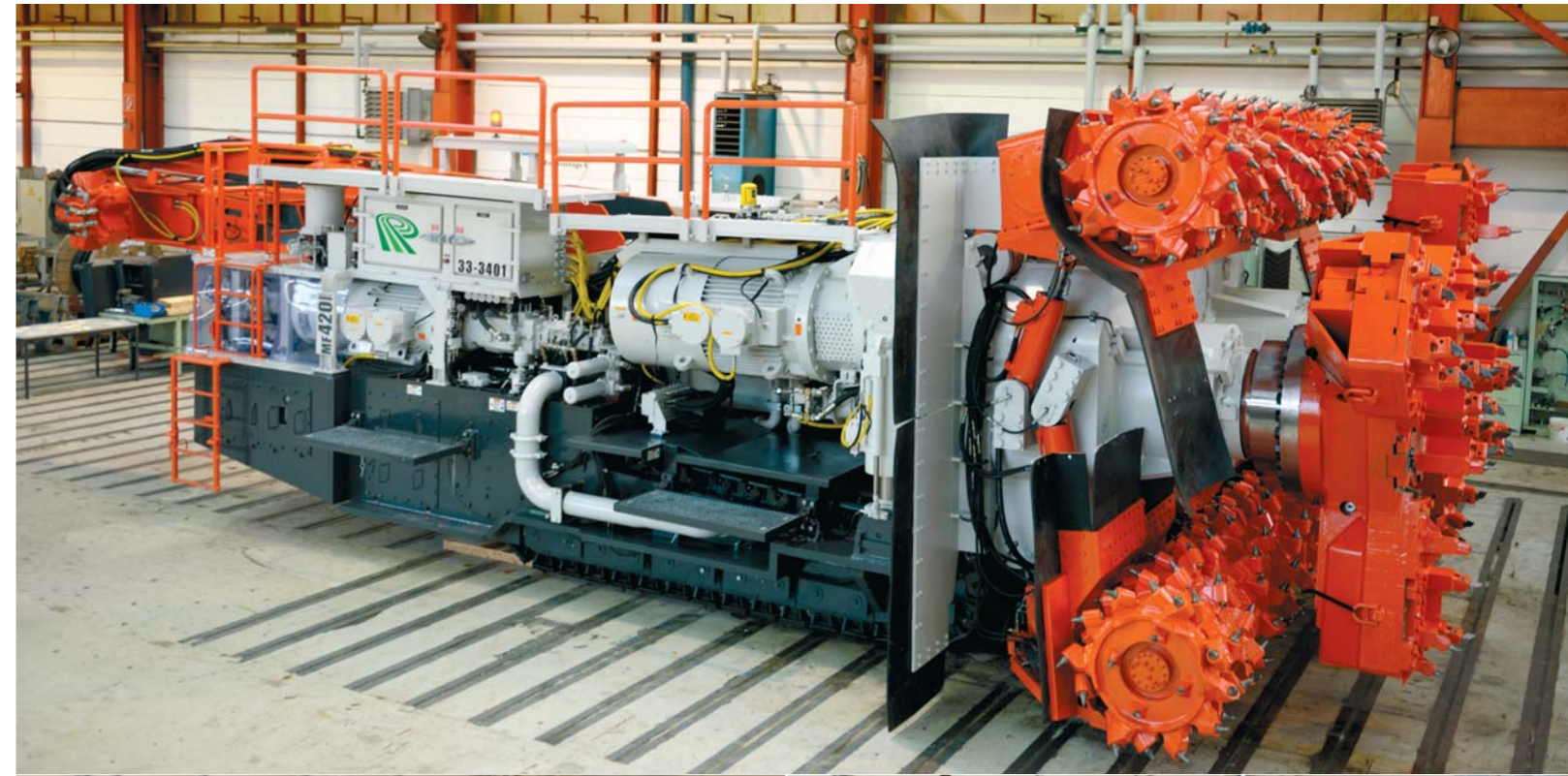
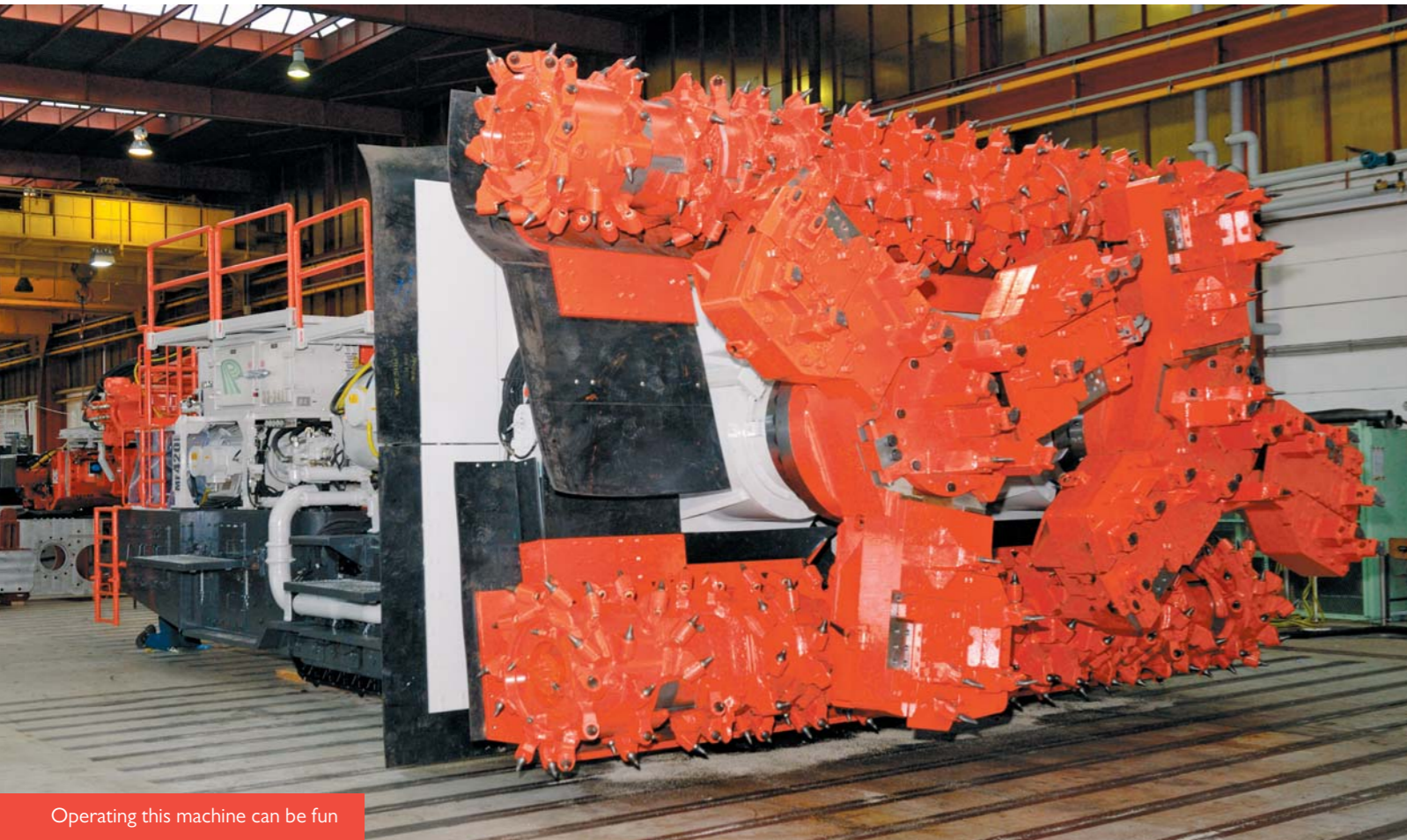


Borer Miner MF420 in Action

Designed for use in potash, trona and salt





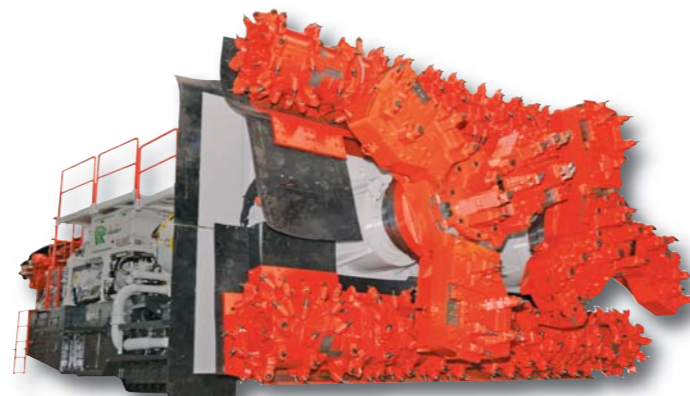
Operating this machine can be fun



From vision to reality

Unique features of the MF420

- Designed for use in potash, trona and salt.
- Radio remote control available with optional condition monitoring of electrical, hydraulic and mechanical system.
- The worlds heaviest and most powerful continuous miner, for true continuous mining.
- Operates with an availability of over 95% with low maintenance costs.
- Extremely long lasting components for trouble free life. Gives exceptionally low cost of ownership.
- Lower wear than a trim chain.
- Sharp corner at top and bottom
- High flexibility to follow undulating reef.



Borer Miner MF420

Sandvik Borer Miner MF420

The Sandvik Borer Miner MF420 is a crawler mounted boring type full-face continuous miner, which is designed and manufactured by Sandvik Mining and Construction..

The Sandvik Borer Miner MF420 is a variable height machine that cuts and delivers material to the rear of the machine in one continuous operation.

The miner is used to drive entries and headings, mine rooms and extract pillars as fast as the haulage equipment can remove the material to the main haulage.

Technical data MF420*

Main dimensions

Mining height	(mm)	3660	(ft)	12	Top drum motor power	(kW)	132	(HP)	177
Mining width	(mm)	6095	(ft)	20	Top drum motor speed	(rpm)	1782	(rpm)	1782
Machine length	(mm)	13400	(ft)	44	No. of top drum motors		1		1
Ground clearance min.	(mm)	260	(in)	10	Top drum shaft speed	(rpm)	41	(rpm)	41
Machine weight	(t)	245	(tons)	270	Hydraulic unit				
Ground pressure	(MPa)	0.60	(PSI)	87	Pump motor	(kW)	250	(HP)	335

Cutting unit

Rotor motor power	(kW)	448	(HP)	600	Traction unit				
Rotor motor speed	(rpm)	1192	(rpm)	1192	Traction force	(kN)	2 x 1600	(lbf)	360000
No. of rotor motors		2		2	Tram speed	(m/min)	0 - 6	(fpm)	0-20
Rotor shaft speed	(rpm)	9.45	(rpm)	9.45	Tram speed cutting max.	(m/min)	0.6	(ft/m)	1.96

Bottom drum motor power	(kW)	132	(HP)	177	Electrical system:				
Bottom drum motor speed	(rpm)	1782	(rpm)	1782	Total installed power	(kW)	1550	(HP)	2078
No. of bottom drum motors		2		2	Cutting capacity	(t/min)	30.1	(tons/min)	33.2
Bottom drum shaft speed	(rpm)	41	(rpm)	41	<small>All dimensions and weights are approximate / Please see technical specification for details * All rights for technical modification are reserved</small>				

